

Worms at Work: Long-run Impacts of Child Health Gains^{*}

Sarah Baird
George Washington University

Joan Hamory Hicks
University of California, Berkeley CEGA

Michael Kremer
Harvard University and NBER

Edward Miguel
University of California, Berkeley and NBER

First version: October 2010

This version: October 2011

We use data from a survey of young Kenyan adults who participated in a deworming program as children to calibrate a version of the Grossman (1972) model, in which investments in health increase future endowments of healthy time. Mean hours worked increase by 12% in the treatment group, or 1.8 more hours each week on a base of 15.2. Treatment respondents report eating an average of 0.1 additional meals per day on a base of 2.2 meals. There is evidence of externalities from deworming in both work hours and meals eaten. Furthermore, both the direct and externality effects are even larger in our preferred subsample analysis on out-of-school youth. Gains are concentrated outside of traditional agriculture, among small business owners and those working for wages. Among wage earners no longer in school, those in the treatment group earned over 20% more, with manufacturing employment tripling. These results suggest health improvements may increase labor supply and facilitate structural transformation. A calibration of the model combining data on the impacts of deworming and the price responsiveness of deworming take-up suggests that fully subsidizing deworming yields greater welfare than partial subsidies or laissez-faire.

* Acknowledgements: Chris Blattman, Hana Brown, Lorenzo Casaburi, Lisa Chen, Garret Christensen, Lauren Falcao, Francois Gerard, Eva Arceo Gomez, Jonas Hjort, Maryam Janani, Anne Karing, Andrew Fischer Lees, Jamie McCasland, Owen Ozier, Martin Rotemberg, Changcheng Song, Sebastian Stumpner, Paul Wang, and Ethan Yeh provided excellent research assistance on the KLPS project. We thank Michael Anderson, Jere Behrman, David Card, Alain de Janvry, Erica Field, Fred Finan, Michael Greenstone, Adriana Lleras-Muney, Steve Luby, Isaac Mbiti, Mark Rosenzweig, T. Paul Schultz, Jim Smith, John Strauss, Alix Zwane and seminar participants at U.C. Berkeley, USC, Harvard, the J-PAL Africa Conference, the Pacific Conference on Development Economics, UCSF, the Gates Foundation WASH Convening in Berkeley, Yale, the University of Oklahoma, Hamilton College, RAND, CGD, the World Bank, Maseno University, the NBER Labor Studies group and BREAD/CEPR Meeting in Paris for helpful suggestions. We gratefully acknowledge our NGO collaborators (International Child Support and Innovations for Poverty Action Kenya), and funding from NIH grants R01-TW05612 and R01-HD044475, NSF grants SES-0418110 and SES-0962614, the World Bank, the Social Science Research Council, and the Berkeley Population Center. All errors remain our own.

1. Introduction

We use data on the impact of child deworming on adult outcomes to calibrate a model of health investment along the lines of Grossman (1972), in which health investments expand future endowments of healthy time. Miguel and Kremer (2004) found that children who were dewormed are healthier and spend substantially more time in school. We follow participants a decade later, when most were 19 to 26 years old. In the full sample, self-reported health improves and mean hours worked increase by 12% in the treatment group, or 1.8 more hours each week on a base of 15.2. Among those no longer enrolled in school, deworming improves self-reported health and increases mean hours worked each week by 17% from a base of 18.5 hours. Living standards improve as well, with treatment respondents eating one-tenth of a meal more per day. Both effects are found not only in the treatment group, but among neighbors, consistent with substantial positive externalities from reduced disease transmission. A calibration of the model combining these results with estimates of the responsiveness of deworming drug take-up to price from Kremer and Miguel (2007) suggest that full subsidies for deworming generate greater social welfare than either zero or partial subsidies over a wide range of plausible estimates of the deadweight loss of taxation. The analysis is based on a new longitudinal data set with an effective tracking survey rate of 84% over roughly ten years.

We find differential impacts across different economic sectors. Among those engaged only in agriculture, there is a small increase in hours worked, consistent with theories in which the marginal product of labor in traditional agriculture is small (Lewis 1954). There is suggestive evidence of modest increases in the use of improved agricultural practices (e.g., fertilizer) and a shift to cash crops. In contrast, among those working for wages or operating small businesses, average work hours increase by five hours in the treatment group, on a base of 45 hours. Earnings increase among out-of-school wage workers by more than 20%, and although estimates are imprecise, point estimates suggest higher profits for owners of small non-agricultural businesses. Work days lost to illness fall by a third among wage earners. Treatment group members are three times more likely to work in

manufacturing, and less likely to do casual labor or work in domestic service, consistent with the hypotheses that the ability to do regular, full-time work allows people to get better jobs.

Manufacturing jobs are among the most demanding in our dataset, with long average work weeks. In an Oaxaca-style decomposition, these shifts in employment occupation account for much of the earnings gains in the treatment group.

We cannot distinguish the extent to which we are observing the direct impact of health as opposed to the indirect impact of health through endogenous changes in education. There is some evidence that among those currently out of school, test scores rose and students were more likely to graduate from primary school.

The increase in work hours we document may shed light on an understudied issue in development economics, namely, the determinants of labor supply. While there is considerable discussion about how work hours in wealthy countries differ with tax rates or labor market institutions (Prescott 2004, Costa 2000), differences in labor hours associated with economic development across space and time have been less studied, despite the fact that they are often larger than differences across wealthy countries.

Many historians see a move to a work life governed by long, regular hours and factory discipline as an important part of the industrial revolution (Clark 1994). While factory workers in less developed countries put in long work days,¹ work hours are low in some rural low-income contexts. For example, Sahelian Burkina Faso, Fafchamps (1993) finds that people only work an average of two to three hours per day on their farms. One classic explanation for low work hours is that the marginal productivity of additional labor in agriculture is low (Lewis 1954). Indeed, Fafchamps (1993) argues that the low levels of labor supply he observed among peasant farmers are due to low marginal products of labor in the traditional rain-fed agricultural sector, with farmers in rainy areas working nearly twice as many hours as those in drier and less productive areas. Others

¹ <http://www.nytimes.com/2008/01/05/business/worldbusiness/05sweatshop.html>

have advanced cultural theories. Colonial observers advanced racial or ethnic theories of Africans' "laziness", love of leisure and lack of ambition (see Abudu 1986 for a discussion of colonial accounts in West Africa). A growing body of work in labor economics emphasizes cultural (though not racial) differences across groups as key drivers of labor supply decisions (Fernandez and Fogli, 2009). Finally, some have advanced efficiency wage stories in which low incomes limit investments in nutrition and health, and this in turn leads to lower labor supply (Dasgupta and Ray 1986).

The young out-of-school adults in our sample who are still in agriculture work an average of only 10 hours per week, while those working for wages work an average of 43 hours per week and those in non-agricultural self-employment work 34 hours. We find that improved health substantially increases labor supply outside of traditional agriculture, but has much less impact in agriculture.²

The results also contribute to the debate on government subsidies for prevention of infectious disease. While some child public health investments, such as immunization, are routinely provided for free by governments, others – such as water treatment and deworming – are not. There has been a lively debate over subsidies, with evidence accumulating that many people who will utilize these measures when they are free will not use them when they must pay (e.g., Kremer and Miguel, 2007, Kremer and Holla 2009, Cohen and Dupas 2010, Ashraf, Berry and Shapiro 2010, Dupas 2011, Kremer, Snyder and Williams 2011). However, to determine whether public investments are worthwhile, it is essential to understand both the direct and externality impact of these investments.

Advocates of public health spending in low-income countries often argue that, even setting aside the immediate utility benefits of improved health, such programs have high rates of return as

² Our finding that the respondents who received health investments as children work significantly more hours as adults echoes existing evidence on the link between disease and work absenteeism in other African settings (Schultz and Tansel 1997), and is consistent with other work that finds that moderate increases in morbidity affect labor supply (Ichino and Moretti 2009, Hanna and Oliva 2011).

investments because of their impact on adult living standards.³ Yet assessing the long-run causal impacts of public health measures has been problematic given the relative lack of both panel data sets tracking children into adulthood, and convincing causal identification from experimental variation. Many existing studies track production within a firm, examining the impact of contemporaneous health on plantation workers' productivity, for example (e.g., Fox et al. 2004). Our evidence suggests this approach misses important gains, in particular on how health investments affect shifts across employment occupations and sectors.

While many studies argue that early childhood health gains *in utero* or before age three have the largest impacts (World Bank 2006, Hodinott *et al.* 2008, and Almond and Currie 2010 are but a few examples), our findings show that even health investments made in school-age children can have important effects. These gains do not appear to be mediated mainly by improved cognitive ability but rather by increased healthy hours, both in work and in school, with its potential impact on learning as well as non-cognitive outcomes.

Our results also contribute to the debate over the flexibility of labor markets in less developed countries. Many have argued that less developed country labor markets are inflexible, consisting of a formal sector with institutionally determined wages in which jobs are rationed (and allocated through a mix of personal connections and credentialism), as well as a large informal sector in which people queue for formal sector jobs (Harris and Todaro 1970). In this model, an increase in individual human capital or labor supply would not necessarily translate into better jobs. Our finding that an investment in human capital leads to a tripling of manufacturing employment suggests far greater

³ The INCAP experiment in Guatemala (Hodinott *et al.* 2008, Maluccio *et al.* 2009, Behrman *et al.* 2009) provided nutritional supplementation to two villages while two others served as a control, and finds gains in male wages of one third, improved cognitive skills among both men and women, and positive intergenerational effects on the nutrition of beneficiaries' children. Beyond the small sample size, a limitation of these studies is their 40% attrition rate over the 35 years of follow-up. Other studies have studied long-run economic impacts of child health, including effects of war-induced famine in Zimbabwe (Alderman *et al.*, 2006a) and economic shocks driven by rainfall variation in Indonesia (Maccini and Yang, 2009). Other noteworthy micro-empirical contributions on nutrition, health and productivity include Glewwe *et al.* (2001), Alderman *et al.* (2003), Schultz (2005), Jukes et al. (2006), Alderman (2007), Thomas *et al.* (2008), and Pitt, Rosenzweig and Hassan (2011) Related U.S. work includes Currie et al. (2002), Currie (2009), Smith (2009), and Case and Paxson (2010).

labor market flexibility outside of traditional agriculture than is commonly imagined. The finding of much larger gains in work hours in wage employment and non-agricultural small business than in traditional agricultural work is consistent with the hypothesis that land and labor markets in agriculture are highly imperfect, but that resources are allocated more efficiently between manufacturing and other non-agricultural work.

The rest of the paper is organized as follows. Section 2 presents a simple model of health as human capital investment related to Grossman (1972). Section 3 discusses the Kenyan context, the deworming project, and the survey. Section 4 lays out the estimation strategy and describes the impacts of deworming on health, education, and labor market outcomes. Section 5 uses the data on price responsiveness and deworming impacts to calibrate the model, and finds that full subsidies for deworming yield greater welfare than partial or no subsidies. The final section concludes, discussing external validity and implications for research and policy.

2. A model of health investment with spillovers

In section 2.1 we first describe a framework related to Grossman's (1972) model of health capital and discuss the relationship between health investments, endowment of healthy time, and work hours, as well as optimal health investment subsidies in the presence of externalities. In 2.2 we extend the model to consider economic sectors characterized by land and labor market imperfections, discuss the work hours response to health investments, and characterize patterns of mobility across sectors.

2.1 Health investment, work hours and deworming subsidies

In the classic Grossman (1972) model, better health status increases “the total amount of time [one] can spend producing money earnings and commodities” (p. 224). We consider a variant of this model in which health investments may lead to increased time endowment of healthy time not just for the individual but also for neighbors through an epidemiological externality, and discuss how optimal

subsidies depend on the externality and direct benefit of the health investment, the responsiveness of health behavior to price, and the deadweight loss of taxation. We will then calibrate the model to derive welfare implications using the empirical estimates in the rest of the paper

Suppose there are N individuals in an area, and in each period t , people can spend their time working (L_t) for income $Y(L)$, or in leisure l . Income can be spent on a consumption good, with the amount of consumption denoted c_t . In the initial period (denoted period 0) people can also purchase deworming medicine. There is no saving or borrowing. Deworming involves paying a price p for a competitively-provided drug and incurring a one-time disutility $d_i \sim f$. Let $F(d)$ denote the fraction of individuals with disutility less than or equal to d .⁴

Deworming increases an individual's healthy time endowment by x in future periods. It also creates a positive externality (spillover) for everyone nearby, increasing their time by x_S . Each individual's endowment of healthy time in period t is $E_{it} = 1 + D_i x + (N - 1)\phi x_S$, where ϕ is the fraction of the rest of the population who have taken deworming medicine (and N is the number of people in the population), 1 is the time endowment if everyone else was untreated, and D_i is an indicator variable for having been previously dewormed. People are infinitely lived and maximize the discounted sum of utility using discount rate δ . We will consider the case where wages depend on deworming decisions, $w_i = 1 + D_i \pi + N\phi \pi_S$, where π is the gain from deworming oneself and π_S is the externality benefit, to show that the comparative statics are similar to where wages are independent of deworming, and will not use the results in the calibration in order to be conservative.

Each individual i has Cobb-Douglas preferences over consumption and leisure at time t ,

$$(1) \quad U_{it}(c, l) = Y(l_{it})^\alpha (E_{it} - L_{it})^{1-\alpha} - D_i d_i,$$

where D_i is an indicator for individual i having taken the medicine. People maximize the value function:

⁴ Technically this isn't a cdf because the population is finite.

$$(2) \quad V_{it}(c, l) = \sum_{j=t}^{\infty} \delta^{j-t} (Y(L_{ij})^\alpha (E_{it} - L_{ij})^{1-\alpha} - D_i d_i).$$

There are two production sectors, traditional agriculture (a) and outside traditional agriculture (o). Production for individual i in each sector j in period t is Cobb-Douglas: $A_j K_{ij}^{\beta_j} L_{it}^{1-\beta_j}$. Outside of agriculture, capital is available at an international interest rate r . In traditional agriculture we assume there are no land and labor markets, but people have an endowment of l and K_{ia} which they can use if they work in traditional agriculture.

We first consider a complete-market, non-agricultural setting. We then consider an agricultural setting without land and labor markets. Finally, we consider a setting in which everyone has the same endowments, talents, and access to jobs, but people have heterogeneous disutilities of moving out of agriculture to the modern sector, $m_i \sim g$ (with $G(m)$ representing the fraction of people with disutility less than or equal to m), independent of the disutility from deworming.

2.2 Complete Markets

Lemma 1: For those who work outside traditional agriculture, the fraction of the time endowment spent working is α in every period after the initial period.⁵

Note that this implies that if we observe deworming increases work time by z hours, we can infer that deworming increases the endowment of healthy time by $\frac{1}{\alpha} z$ hours.

Since capital flows freely, people earn a wage $w = (A_o - r) \left(\frac{A_o}{r}\right)^{\frac{1}{1-\xi}}$, so for simplicity of notation we will denote earnings as w_l for labor outside of agriculture.

⁵ To see this, note that for a given amount of labor, the optimal amount of capital, coming from the first-order condition, is $K = L_{it} \left(\frac{A_o}{r}\right)^{\frac{1}{1-\beta_o}}$. Plugging back in to utility and taking the derivative with respect to capital gives that $L_{it} = \alpha E_{it}$. \square

Proposition 1: If there are competitive capital markets, so $Y(L_t) = wL_t$, then the proportion of the population that deworms at a given price of deworming medicine \hat{p} is $F\left(\frac{(w\alpha)^\alpha(1-\alpha)^{1-\alpha}\left\{\frac{\delta}{1-\delta}x - \frac{\hat{p}}{w}\right\}\right)$.

Proof: Conditional on buying deworming medicine, agents choose L in the initial period, denoted period zero, to maximize $U_0 = (wL_0 - p)^\alpha(E_0 - L_0)^{1-\alpha}$. The FOC simplifies $(wL_0 - p)(1 - \alpha) = \alpha w(E_0 - L_0)$, implying $L_t = \alpha E_t + \frac{p-\alpha p}{w}$. This implies that utility in the initial period conditional on taking deworming medicine is

$(w\alpha E_0 - \alpha p)^\alpha((1 - \alpha)E_0 - \frac{p-\alpha p}{w})^{1-\alpha} - d_i = (1 - \frac{p}{E_0 w})(w\alpha E_0)^\alpha((1 - \alpha)E_0)^{1-\alpha} - d_i$, whereas the utility in the initial period conditional on not deworming is $(w\alpha E_0)^\alpha((1 - \alpha)E_0)^{1-\alpha}$. Therefore, initial period utility for those who deworm is reduced by $p * \frac{(w\alpha)^\alpha((1-\alpha))^{1-\alpha}}{w} - d_i$.

After the initial period, deworming increases healthy time by x per period. Let \underline{E}_t be the time endowment if someone has not taken deworming medicine. Utility conditional on deworming in each period after the initial period is therefore $(w\alpha(\underline{E}_t + x))^\alpha((1 - \alpha)(\underline{E}_t + x))^{1-\alpha}$

$$= (1 + \frac{x}{\underline{E}_t})(w\alpha\underline{E}_t)^\alpha(1 - \alpha)\underline{E}_t)^{1-\alpha}.$$

As a result, the per-period increase in utility from deworming is equal to $x * (w\alpha)^\alpha((1 - \alpha))^{1-\alpha}$.

Individual i will deworm if the discounted value of increased time in future periods exceeds the price of the medicine and the utility costs of deworming, or $\frac{\delta}{1-\delta}x * (w\alpha)^\alpha((1 - \alpha))^{1-\alpha} - \hat{P} * \frac{(w\alpha)^\alpha((1-\alpha))^{1-\alpha}}{w} \geq d_i$. Aggregating over all individuals completes the proof. \square

Since the utility gain from an increase in time of x in a given period is equivalent to the utility gain from a cash transfer of xw , and is equal to $x(w\alpha)^\alpha(1 - \alpha)^{1-\alpha}$, a cash transfer of $\frac{wd_i}{(w\alpha)^\alpha(1-\alpha)^{1-\alpha}}$ increases agent i 's utility by exactly d_i .

It is straightforward to compute deworming take-up and social welfare in an extension in which deworming also increases labor productivity per hour of work, where the wage is increasing in past health investments and spillovers. (While for simplicity below we will continue to focus on the case in which deworming increases work hours but not wages, all insights are equivalent.)

Corollary 1: If $w_i = 1 + D_i\pi + N\phi\pi_S$, then the proportion of the population that deworms at a given price of deworming medicine \hat{p} is $F\left(\left((\alpha)^\alpha(1 - \alpha)^{1-\alpha}\right)\left\{\frac{\delta}{1-\delta}(x + \pi(1 + x + \phi x_S)(1 + N\phi\pi_S) - \frac{\hat{p}}{w})\right\}\right)$, which is also increasing in \hat{p} .

Proof: Analogous to Proposition 1, taking into account that wages are also affected by deworming treatment and externalities. \square

Consider policy for a government that seeks to maximize social welfare (the sum of utility of all N members of the population) but only has access to distortionary taxation (or faces constraints leading to wasteful expenditures). Let DWL denote the loss associated with raising and spending one dollar of revenue. Furthermore, let \bar{s}_i denote the disutility of deworming for someone who is indifferent to treatment at a price of $p - s_i$. That is to say, $\bar{s}_i = \left(\left(\frac{\delta}{1-\delta}x - \frac{p-s_i}{w}\right) * (w\alpha)^\alpha(1 - \alpha)^{1-\alpha}\right)$.

Proposition 2: Consider two different levels of subsidies, s_1 and s_2 where $s_2 > s_1$. If the government faces a deadweight loss (DWL), it prefers subsidy s_2 to s_1 if:

$$(3) \quad \int_{d_i=\bar{s}_1}^{\bar{s}_2} \left(\frac{\delta}{1-\delta}(x + x_S(N - 1))w\right) dF(d_i) - (s_2 - s_1)DWL \int_{d_i=0}^{\bar{s}_1} dF(d_i) - \int_{d_i=\bar{s}_1}^{\bar{s}_2} [s_2 * DWL + p + \tilde{d}_i] dF(d_i) \geq 0.$$

Proof: Each person who is induced to deworm, personally benefits by $\left(\frac{\delta}{1-\delta}xw\right)$ from increased time and others benefit by $\left(\frac{\delta}{1-\delta}\gamma w(N - 1)\right)$ from the externality benefits of increased time. However, those dewormed also incur personal costs of \tilde{d}_i from the disutility of medicine and p from the price of the medicine. The middle integral captures the deadweight loss from having to further subsidize

people who would have dewormed with the lower subsidy. Aggregating over all of the individuals who are induced by the higher subsidy represents the monetary-equivalent impact of increased deworming. \square

Corollary 2: If the government faces no deadweight loss from taxation, subsidizing the price of medicine by the per capita magnitude of the externality benefit, $\frac{\delta}{1-\delta} w x_s (N - 1)$, maximizes social welfare.

Proof: If $DWL = 0$, we can rewrite the government optimization problem as maximizing

$\int_{d_i=\bar{s}_1}^{\bar{s}_2} \left(\frac{\delta}{1-\delta} (x + \gamma(N - 1))w - p - \frac{w d_i}{(w\alpha)^\alpha (1-\alpha)^{1-\alpha}} \right) dF(d_i)$, since all of the other terms are 0. The

solution is such that, for the marginal user $\left(\frac{\delta}{1-\delta} x - \frac{p - \frac{\delta}{1-\delta} w \gamma (N-1)}{w} \right) - \frac{w d_i}{(w\alpha)^\alpha (1-\alpha)^{1-\alpha}} = 0$, since for

lower subsidies the integrand is (weakly) positive, and for higher subsidies it is (weakly) negative.

This implies that the social planner solution is to subsidize deworming by the amount of its externality. \square

However, if $DWL > 0$ and demand for medicine is perfectly inelastic with respect to price between two price levels, the government will not want to subsidize medicine to the lower level.

2.3 Traditional Agriculture

Below we consider a traditional agriculture setting in which people have a fixed plot of land and home produce, with access to neither land nor labor markets. We then consider a setting in which people can choose to stay in traditional agriculture or pay a fixed cost to switch out of the agricultural sector.

Proposition 3: In the absence of land and labor markets, agriculturalists will work a constant fraction of their time $\alpha \frac{1-\beta}{1-\alpha\beta} \leq \alpha$, regardless of their total stock of time or land.

Proof: Agriculturalists produce $AK^{\beta}L^{1-\beta}$, and thus choose to maximize utility

$(A_a K_{ia}^{\beta} L_{it}^{1-\beta})^{\alpha} (E_t - L)^{1-\alpha}$. The FOC implies that $\alpha(1 - \beta)(E_t - L) = (1 - \alpha)L$, so $L = \alpha \frac{1-\beta}{1-\alpha\beta} E_t$, which is smaller than α , the fraction of time people would work outside traditional agriculture. This implies that extra time is worth relatively less to those in agriculture due to the decline in returns to agricultural labor. Agriculturalists with an initial utility of u who receive x extra units of time have utility of $u \left(1 + \frac{x}{E_t}\right)^{1-\alpha\beta}$, whereas if their wage were flat (as in the non-agricultural sector in our model) their utility would be $u \left(1 + \frac{x}{E_t}\right)$, which is larger. However, if one were to estimate the change in total time endowment by taking the change in work hours and multiplying by $\frac{1}{\alpha}$, as one would in the non-agricultural sector, one would understate the benefits from extra time in agriculture.

Corollary 3. Suppose agent i with utility u without deworming works z hours more with deworming. If $\alpha < 0.5$, a lower bound on the increase in utility is provided by the increase in utility associated with $\frac{z}{\alpha}$ extra healthy hours.

Proof: For $\beta = 0$ or $z = 0$, $u \left(1 + \frac{z}{\alpha E_t}\right) = \left(1 + \frac{z}{\alpha E_t} \frac{1-\alpha\beta}{1-\beta}\right)^{1-\alpha\beta}$. For $\beta > 0$, if we assume perfect labor markets, the derivative of estimated utility with respect to increases in work hours is $\frac{u}{\alpha E_t}$. However, since people are adjusting work hours less than assumed, the true marginal increase in utility is actually $\frac{u}{\alpha E_t} \frac{(1-\alpha\beta)^2}{1-\beta} * \left[\left(1 + \frac{z}{\alpha E_t} \frac{1-\alpha\beta}{1-\beta}\right)^{-\alpha\beta}\right]$. The term in brackets is strictly greater than 1 for $\beta > 0$, and the coefficient outside the brackets is greater than one as long if $2\alpha - 1 < \alpha^2\beta$, which implies that the true utility multiplier is greater than the imputed one for any positive change of hours. \square

The intuition is that the gain in leisure for agricultural will be more than $\frac{\alpha}{1+\alpha} Z$

Proposition 4: If people can choose their sector, increasing deworming subsidies (weakly) increases participation in non-agricultural work.

This follows from the fact that the marginal product of labor is decreasing in agriculture and constant in non-agricultural work. Specifically, people leave traditional agriculture if

$$(4) \max_{D_i} \left\{ \sum_{j=t}^{\infty} \delta^{j-t} \left(w\alpha(1 + D_i x + (N-1)\phi x_S) \right)^\alpha (1 + D_i x + (N-1)\phi x_S - l_t)^{1-\alpha} \right\} - m_i - d_i D_i \} > \max_{D_i} \left\{ \sum_{j=t}^{\infty} \delta^{j-t} \left(A\bar{K}_i^\beta \left(\alpha \frac{1-\beta}{1-\alpha\beta} (1 + D_i x + (N-1)\phi x_S) \right)^{1-\beta} \right)^\alpha \left((1 + D_i x + (N-1)\phi x_S) \left(1 - \alpha \frac{1-\beta}{1-\alpha\beta} \right) \right)^{1-\alpha} \right\}.$$

3. Background

This section describes the context, the deworming program, and the follow-up survey, including our respondent tracking approach, and sample summary statistics.

3.1 The context

The health problem we examine, intestinal worm infections, is among the world's most widespread, with roughly one in four people infected with hookworm, whipworm, roundworm, or schistosomiasis (Bundy 1994, de Silva *et al.* 2003). Although light worm infections are often asymptomatic, more intense infections can lead to lethargy, anemia and growth stunting. Treating worm infections (once to twice per year) can improve child appetite, growth and physical fitness (Stephenson *et al.* 1993), and reduce anemia (Guyatt *et al.* 2001, Stoltzfus *et al.* 1997). It also can strengthen children's immunological response to other infections, potentially producing broader health benefits, such as reduced infection prevalence with *Plasmodium*, the malaria parasite (Kirwan *et al.* 2010). Chronic parasitic infections in childhood are known to generate inflammatory (immune defense) responses and elevated cortisol levels that lead substantial energy to be diverted from growth, and there is

mounting evidence that this can produce adverse health consequences throughout the life course, including atherosclerosis, impaired intestinal transport of nutrients, organ damage, and cardiovascular disease (Crimmins and Finch 2005).

Previous work in our Kenyan sample shows that deworming treatment led to large medium-run gains in school attendance and health outcomes. Due to worms' infectious nature, sizeable externality benefits also accrued to the untreated within treatment communities and to those living near treatment schools (Miguel and Kremer 2004), as well as to younger children in the treatment communities and especially the younger siblings of the treated. Ozier (2010) shows that children who were 0-3 years old when the deworming program was launched and lived in the catchment area of a treatment school experienced large cognitive gains ten years later, with average test score gains (for those who were less than one year old when their communities received mass deworming treatment) of 0.4 standard deviation units, equivalent to 0.5-0.8 of a year of school learning in his sample.

Bleakley (2007, 2010), examines the impact of a large-scale deworming campaign in the U.S. South during the early 20th century, by comparing heavily infected versus lightly infected regions over time in a difference-in-difference design. He finds that deworming raised adult income by roughly 17%, and, extrapolating these findings to the even higher worm infection rates found in tropical Africa, estimates that deworming in Africa could lead to income gains of 24%, similar to our estimated earnings gains for wage workers.⁶

We study the impact of a school-based deworming program in Busia district, a densely-settled farming region of rural western Kenya adjacent to Lake Victoria that is somewhat poorer than

⁶ There has been a debate in public health and nutrition about the cost-effectiveness of deworming (see Taylor-Robinson *et al.* 2007). Early work by Schapiro (1919) using a first-difference research design found wage gains of 15-27% on Costa Rican plantations after deworming. Weisbrod *et al.* (1973) document small correlations between worm infections and labor productivity and test scores in St. Lucia. Bundy *et al.* (2009) argue that many studies understate deworming's benefits since they fail to consider externalities by using designs that randomize within schools; focus almost exclusively on biomedical criteria and ignore cognitive, education and income gains; and do not address sample attrition. The current paper attempts to address these three concerns. Beyond Miguel and Kremer (2004) and the current paper, Alderman *et al.* (2006b) and Alderman (2007) also use a cluster randomized controlled design and find large positive child weight gains in Uganda.

the Kenyan average.⁷ Survey respondents originally attended rural schools and are now young adults mainly in their early twenties, with roughly one quarter still enrolled in school at the time of the survey. Agriculture in Busia is rain-fed with two cropping seasons per year, and there are few draft animals. Unlike other parts of Kenya, where many farmers have turned to growing vegetables for local markets or flowers, coffee or tea for international markets, there is little intensification of production with slightly more than 1% of respondents growing cash crops, as discussed below.

The Lewis (1954) model assumption that young adults working in traditional family agriculture receive a share of output rather than their marginal product is plausible in this context. Markets for agricultural land and labor exist in this area but are not highly developed. Young adults have the option of staying on their parents farms or leaving home, to seek paid work, to start businesses, or, if female, to marry. Sons typically inherit land from their parents, with many receiving inter-vivos land transfers. Daughters co-locate with their husbands at marriage (Government of Kenya 1986). If adult children are entitled to share food if living at home, but not otherwise, then whether moving away creates a positive or negative externality for their family depends on how their marginal productivity at home compares to what they consume.

At the time of survey, just over half (53% of individuals in the control group) of the individuals we study work on family farms, primarily for subsistence, and one-quarter of individuals are still in school. Nearly 17% of study participants are employed in the wage labor sector, and 10% are in non-agricultural self-employment.

3.2 The Primary School Deworming Program (PSDP)

⁷ The 2005 Kenya Integrated Household Budget Survey found 62% of Busia households fall below the poverty line compared to 41% nationally, and 75% of Busia adults were literate versus 80% nationally. Given that Kenyan per capita income is somewhat above the sub-Saharan African average (excluding South Africa), the fact that Busia is slightly poorer than the Kenyan average probably makes the district more representative of rural Africa as a whole.

In 1998, the non-governmental organization (NGO) ICS launched the Primary School Deworming Program (PSDP) to provide deworming medication to children enrolled in 75 primary schools. The schools participating in the program consisted of 75 of the 89 primary schools in Budalangi and Funyula divisions in southern Busia (with 14 town schools, all-girls schools, geographically remote schools, and program pilot schools excluded), and contained 32,565 pupils at baseline.

Parasitological surveys conducted by the Ministry of Health indicated that these divisions had high baseline helminth infection rates at over 90%. Using modified WHO infection thresholds (described in Brooker *et al.* 2000a), over one third of children in the sample had “moderate to heavy” infections with at least one helminth at the time of the baseline survey, a high but not atypical rate in African settings (Brooker *et al.* 2000b, Pullan *et al.* 2011). The 1998 Kenya Demographic and Health Survey indicates finds that 85% of 8 to 18 year olds in western Kenya were enrolled in school at that time, indicating that our school-based sample is broadly representative of children in the region.

The 75 schools involved in this program were experimentally divided into three groups (Groups 1, 2, and 3) of 25 schools each: the schools were first stratified by administrative sub-unit (zone), listed alphabetically by zone, and were then listed in order of pupil enrollment within each zone, and every third school was assigned to a given program group; Supplementary Appendix B contains a detailed description of the experimental design. The groups are well-balanced along baseline demographic and educational characteristics, both in terms of mean differences and distributions, where we assess the latter with the Kolmogorov-Smirnov test of the equality of distributions (Table 1).⁸ The same balance is also evident among the subsample of respondents not still enrolled in school, who will be the main sample for analyzing labor market outcomes, and among those currently working for wages (see supplementary appendix tables A1, A2).

Due to the NGO’s administrative and financial constraints, the schools were phased into the deworming program over the course of 1998-2001 one group at a time. This prospective and

⁸ Miguel and Kremer (2004) present a fuller set of baseline covariates for the treatment and control groups.

staggered phase-in is central to this paper's econometric identification strategy. Group 1 schools began receiving free deworming treatment in 1998, Group 2 schools in 1999, while Group 3 schools began receiving treatment in 2001; see Figure 1. The project design implies that in 1998, Group 1 schools were treatment schools while Group 2 and 3 schools were the control schools, and in 1999 and 2000, Group 1 and 2 schools were treatment and Group 3 schools were control, and so on.

The NGO typically requires cost sharing, and in 2001, a randomly chosen half of the Group 1 and 2 schools took part in a program in which parents had to pay a small positive price to purchase the drugs, while the other half of Group 1 and 2 schools received free treatment (as did all Group 3 schools). Kremer and Miguel (2007) show that cost-sharing led to a sharp drop in deworming treatment, by 60 percentage points, introducing further exogenous variation in deworming treatment that we exploit. In 2002 and 2003, all sample schools received free treatment.

Children in Group 1 and 2 schools thus were assigned to receive 2.41 more years of deworming than Group 3 children on average (Table 1, Panel A), and these early beneficiaries are what we call the deworming treatment group below. We focus on a single treatment indicator rather than separating out effects for Group 1 versus Group 2 schools since this simplifies the analysis and because we lack statistical power to distinguish effects across these groups, although we also present some results taking into account the Group 1 versus Group 2 differences. The fact that the Group 3 schools eventually did receive deworming treatment will tend to dampen any estimated treatment effects relative to the case where the control group was never phased-in to treatment. In other words, a program that consistently dewormed some children throughout childhood while others never received treatment might have even larger impacts. Note, however, that several cohorts "aged out" of primary school (i.e., graduated or dropped out) before treatment was phased-in to Group 3 schools.

Deworming drugs for geohelminths (albendazole) were offered twice per year and for schistosomiasis (praziquantel) once per year in treatment schools.⁹ We focus on intention-to-treat (ITT) estimates, as opposed to actual individual deworming treatments, in the analysis below. This is natural as compliance rates are high. To illustrate, 81.2% of grades 2-7 pupils scheduled to receive deworming treatment in 1998 actually received at least some treatment. Absence from school on the day of drug administration was the leading reported cause of non-compliance. The ITT approach is also attractive since previous research showed that untreated respondents within treatment communities experienced significant health and education gains (Miguel and Kremer 2004), complicating estimation of treatment effects on the treated. Miguel and Kremer (2004) show that deworming treatment improved self-reported health and reduced school absenteeism by one quarter during 1998-1999. Large externality benefits of treatment also accrued to individuals attending other schools within 6 kilometers of program treatment schools. There were no significant academic or cognitive test score gains during 1998-2000.

3.3 Kenya Life Panel Survey (KLPS)

The Kenyan Life Panel Survey (KLPS-2) was collected during 2007-2009, and tracked a representative sample of approximately 7,500 respondents who had been enrolled in primary school grades 2-7 in the 75 PSDP schools at baseline in 1998.¹⁰

⁹ Following World Health Organization recommendations (WHO 1992), schools with geohelminth prevalence over 50% were mass treated with albendazole every six months, and schools with schistosomiasis prevalence over 30% mass treated with praziquantel annually. All treatment schools met the geohelminth cut-off while roughly a quarter met the schistosomiasis cut-off. Medical treatment was delivered to the schools by Kenya Ministry of Health public health nurses and ICS public health officers. Following standard practices at the time, the medical protocol did not call for treating girls thirteen years of age and older due to concerns about the potential teratogenicity of the drugs.

¹⁰ A midterm round (KLPS-1) was conducted in 2003-05. We focus on the KLPS-2, rather than KLPS-1, since it was collected at a more relevant time point for us to assess adult life outcomes: the majority of respondents are adults by 2007-09 (with median age at 22 years versus 18 in KLPS-1), most have completed their schooling, many have married, and a growing share are engaged in wage employment or non-agricultural self-employment (Appendix Figure A2).

Survey enumerators traveled throughout Kenya and Uganda to interview those who had moved out of local areas.¹¹ As time progressed and fewer respondents were being located, a random subsample containing approximately one quarter of still-unfound target respondents was drawn. Those sampled were tracked “intensively” (in terms of enumerator time and travel expenses) for the remaining months, while those not sampled were no longer actively tracked. We re-weight those chosen for the “intensive” sample by their added importance to maintain the representativeness of the sample. As a result, all figures reported here are “effective” tracking rates (ETR), calculated as a fraction of those found, or not found but searched for during intensive tracking, with weights adjusted appropriately. The effective tracking rate (ETR) is a function of the regular phase tracking rate (RTR) and intensive phase tracking rate (ITR) as follows:

$$(5) \quad \text{ETR} = \text{RTR} + (1 - \text{RTR}) * \text{ITR}$$

This is analogous to the approach in Moving To Opportunity (Kling *et al.* 2007, Orr *et al.* 2003).

Overall, the RTR in KLPS-2 is 65.0% and the ITR is 62.1%, which implies that 86% of respondents were effectively located by the field team, with 82.5% surveyed while 3% were either deceased, refused to participate, or were found but were unable to be surveyed (Table 1, Panel B). The effective survey rate among those still alive is 84%. These are high tracking rates for any age group over a decade, and especially for a highly mobile group of adolescents and young adults, and they are on par with some of the best-known panel survey efforts in less developed countries, such as the Indonesia Family Life Survey (Thomas *et al.* 2001, 2010), and several recent African surveys.¹² Reassuringly, survey tracking rates are nearly identical and not significantly different in the treatment and control groups (Panel B).

4. Deworming impacts on health, education and labor market outcomes

¹¹ See supplementary appendix table A5. Baird, Hamory and Miguel (2008) further discusses the tracking approach.

¹² Other successful longitudinal data collection efforts among African youth are Beegle *et al.* (2010), Lam *et al.* (2008), and Duflo *et al.* (2011). Pitt, Rosenzweig and Hassan (2011) document high tracking rates in Bangladesh.

This section presents the estimation strategy and impacts on health, education and labor outcomes.

4.1 Estimation strategy

The econometric approach relies on the PSDP’s prospective experimental design, namely, the fact that the program exogenously provided individuals in treatment (Group 1 and 2) schools two to three additional years of deworming treatment. We also adopt the approach in Miguel and Kremer (2004) and estimate the cross-school externality effects of deworming. Exposure to spillovers is captured by the number of pupils attending deworming treatment schools within 6 kilometers; conditional on the total number of primary school pupils within 6 kilometers, the number of treatment pupils is also determined by the experimental design, generating credible estimates of local spillover impacts.

We first present estimates in which we separately estimate the impact of being in a treatment school (which received either two or three more years of deworming) and the externality impact of being within 6 km of such a school. Since we have insufficient statistical power to distinguish between the impact of being assigned to a Group 1 versus Group 2 schools in the “unconstrained” analysis, we group both together as the treatment group. We then report estimates in which we constrain both the treatment school and externality impacts to be linear in the intensity of deworming treatment, constraining impacts to be proportional to the reductions in worm infection rates due to deworming found in the data used in Miguel and Kremer (2004). This latter instrumental variables (IV) approach uses all of the available exogenous variation in deworming, including the variation associated with assignment to Group 1 versus Group 2 schools, and to cost sharing (along with the associated variation in externalities)

The dependent variable is a labor market outcome (such as hours worked in the last week), $Y_{ij,2007-09}$, for individual i from school j , as measured in the 2007-09 KLPS-2 survey:

$$(6) \quad Y_{ij,2007-09} = a + bT_j + X_{ij,0}'c + d_1N_j^T + d_2N_j + e_{ij,2007-09}$$

The labor market outcome is a function of the assigned deworming program treatment status of the individual's primary school (T_j), and thus this is an intention to treat (ITT) estimator; the number of treatment school pupils (N_j^T) and the total number of primary school pupils within 6 km of the school (N_j); a vector $X_{ij,0}$ of baseline individual and school controls; and a disturbance term $e_{ij,2007-09}$, which is clustered at the school level.¹³ The $X_{ij,0}$ controls include school geographic and demographic characteristics used in the "list randomization" for the PSDP, the student gender and grade characteristics used for stratification in drawing the KLPS sample, the pre-program average school test score to capture school academic quality, the 2001 cost-sharing school indicator, as well as controls for the month and wave of the interview.

The main coefficients of interest are b , which captures gains accruing to deworming treatment schools, and d_1 , which captures any spillover effects of treatment for nearby schools. Bruhn and McKenzie (2009) argue for including variables used in the randomization procedure as controls in the analysis, which we do, although as shown below, the coefficient estimates on the treatment indicator are robust to whether or not we do, as expected given the research design. Results are also robust to accounting for the cross-school spillovers. In fact, accounting for externalities tends to increase the b coefficient estimate; in other words, a failure to account for the program treatment "contamination" generated by spillovers dampens the "naïve" difference between treatment and control groups (and also leads the researcher to miss a second dimension of program gains, the spillovers themselves). Certain specifications explore heterogeneity by interacting individual demographic characteristics with the deworming treatment indicator.

Theoretically, the sign of the interaction with the local level of serious worm infections at baseline is ambiguous, and the effect of the program at higher levels of initial disease prevalence

¹³ Miguel and Kremer (2004) separately estimate effects of the number of pupils between 0-3 km and 3-6 km. Since the analysis in the current paper does not generally find significant differences in externality impacts across these two ranges, we focus on 0-6 km for simplicity. The externality results are unchanged if we focus on the proportion of local pupils who were in treatment schools as the key spillover measure (i.e., N_j^T / N_j , results not shown). Several additional econometric issues related to estimating externalities are discussed in Miguel and Kremer (2004).

need not be monotonic. This is because areas with higher prevalence will typically have conditions more conducive to transmission of the disease; re-infection is thus likely to occur more quickly in these areas and hence that the impact of treatment could potentially be smaller in these areas than in areas where it takes longer for re-infection to occur. Given this theoretical ambiguity, and the lack of strong evidence in the data that interaction terms or higher order polynomial externality terms are justified, we focus on specifications in which T_j and N_j^T are additively separable.

In the “constrained” IV analysis, among the representative subsample of respondents administered parasitological stool sample exams during 1999, 2001 and 2002, we first estimate the first stage relationship by regressing an indicator for individual moderate-heavy worm infection on the indicators for assignment to a deworming group in each year, a cost-sharing indicator, and the associated externality variables (and other standard controls) in a specification similar to the estimating equation above.¹⁴ This generates the predicted number of years with moderate-heavy worm infections between 1998-2001 at the individual level, which serves as the endogenous variable in the IV specifications. We then use a two-sample IV approach with bootstrapped standard errors (Angrist and Pischke 2008) to generate the estimated impact of eliminating a moderate-heavy worm infection in the full sample.

The restricted specification imposes the condition that the direct labor market impacts of different interventions that affected worm loads (e.g., varying numbers of years of assigned treatment, cost-sharing, and associated externalities) are proportional to treatment intensity as defined as the reduction in worm loads induced by the treatment. We do not interpret the resulting estimates literally as the impact of eliminating a moderate-heavy worm infection, since there may also be effects of reducing worm load that do not lead to crossing the threshold of moderate-heavy infection,

¹⁴ Since the parasitological exams were collected early in each calendar year, we follow Miguel and Kremer (2004) in assuming that the worm infection measures are relevant for understanding the previous year, i.e., that the early 1999 parasitological survey captures infection levels in 1998. For ethical reasons, parasitological surveys were only collected for groups that were to be treated in that year, so Group 1 schools have parasitological data for 1998-2002, Group 2 schools for 1999-2002, and Group 3 schools for 2001-2002.

and since effects may also be due to complementarities in school attendance between children, for example. The availability of multiple instruments allows us to conduct over-identification tests of the assumption that labor gains are proportional to reductions in worm infections.

4.2 Impacts on health and education

We first document that deworming led to large reductions in moderate-heavy worm infections during the original project, using the parasitological stool sample data from 1999 and 2001 (Table 2, Panel A). As in the earlier study, there are large direct impacts of being assigned to a treatment school (-0.245, s.e., 0.030) as well as externality benefits for those living within 6 kilometers of treatment schools (-0.075, s.e., 0.026).¹⁵ There is weak evidence of improved hemoglobin status (1.03, s.e. 0.81). In a 1999 survey conducted among a representative subsample of pupils, there is also a significant reduction in self-reported “falling sick often”, by 3.7 percentage points (s.e. 1.5). In addition to these health findings, the original study also found gains in primary school participation on the order of 0.127 of a year of schooling (s.e. 0.064, significant at 99% confidence).¹⁶ However, little evidence was found in the original study to suggest improvements in academic test scores associated with treatment (while the impact of deworming on primary school academic test score performance in 1999 is positive, it is not statistically significant),

Adult health also improved as a result of deworming: respondent self-reported health (on a normalized 0 to 1 scale) rose by 0.041 (s.e. 0.018, significant at 95% confidence, Table 2, panel B). Many studies have found that self-reported health reliably predicts actual morbidity and mortality even when other known health risk factors are accounted for (Idler and Benyamini 1997, Haddock *et*

¹⁵ The time pattern of moderate-heavy worm infections across treatment groups is presented in Appendix Figure A3.

¹⁶ This school participation measure is defined as being found present in school by survey enumerators on the day of an unannounced attendance check. This is our most objective measure of actual time spent at school, and was a main outcome measure in Miguel and Kremer (2004), but two important limitations are that it was only collected during 1998-2001, and only at primary schools in the study area; the falling sample size between 1998 to 2001 (shown in appendix Table A3) is mainly driven by students graduating from primary school.

al. 2006, Brook *et al.* 1984). Note that it is somewhat difficult to interpret this impact causally since it may partially reflect health gains driven by the higher adult earnings detailed below, in addition to the direct health benefits of earlier deworming. Yet the fact that there were similar positive and statistically significant impacts on self-reported health in earlier periods, namely, in the 1999 survey before any were working, suggests that at least part of the effect is directly due to deworming.

Deworming did not lead to detectable height gains, even when we restrict attention to younger individuals (those in grades 2-4 in 1998, regression not shown). The height result is reassuring since the deworming beneficiaries were already of primary school age when the program started, and thus beyond the age at which we would expect nutritional and health improvements to translate into permanent anthropometric gains.

Table 2, Panel C describes results related to adult education outcomes. For the period 1998-2007, we collected self-reported school enrollment data by year, using an indicator which equals one if the individual was enrolled for at least part of a given year. These annual indicators show consistently positive effects from 1999 to 2007 both on the deworming treatment indicator and the externalities term, and the total increase in school enrollment in treatment relative to control schools over the period is 0.279 years (s.e. 0.147, significant at 90% confidence). The treatment effect estimates are largest during 1999-2003 before tailing off during 2004-07 (appendix table A3). By the time of the 2007-09 survey, there are no differences in school enrollment and the treatment and control respondents no longer in school have comparable observable characteristics (appendix table A1). Given that the school enrollment data misses out on attendance impacts, which are sizeable, a plausible lower bound on the total increase in time spent in school induced by the deworming intervention is the 0.129 gain in school participation from 1998-2001 plus the school enrollment gains from 2002-2007 (multiplied by average attendance conditional on enrollment), which works out to nearly 0.3 years of schooling.

Despite the sizeable gains in years of school enrollment, there are no significant impacts on total grades of schooling completed (0.153, s.e. 0.143). A likely explanation is that the increased time in school is accompanied by increased grade repetition (0.060, s.e. 0.017, significant at 99%). To summarize, deworming treatment respondents attended school more and were enrolled for more years on average, but do not attain significantly more grades in part because repetition rises substantially.

Test score performance is another natural way to assess human capital impacts. As shown in Table 2, Panel C, there is some evidence that the passing rate did improve on the key primary school graduation exam, the Kenya Certificate of Primary Education (point estimate 0.048, s.e. 0.031), and that English vocabulary knowledge (collected in 2007-09) is higher in the treatment group (impact of 0.076 standard deviations in a normalized distribution, s.e., 0.055).

If we focus on the subsample of respondents who are no longer in school (the natural sample of interest in the analysis of labor market impacts to follow), we find slightly larger and statistically significant impacts of deworming treatment on test scores. We also see increases in the rate at which students pass the KCPE primary-school leaving exam.¹⁷

It is also possible that the increase in actual time spent in school might yield some labor market returns through improved social or other non-cognitive skills (Heckman, Stixrud, and Urzua 2006), such as greater ability to follow rules or show up regularly and on time.

4.3 Deworming Impacts on Labor Supply

As we note above, at the time of survey, approximately 53% of control group individuals perform agriculture for subsistence on small family farms, and one-quarter are still in school. Nearly 17% are

¹⁷ Note that we cannot reject the hypothesis that the treatment impact for those in and out of school on these two test score measures is the same (results not shown).

employed in the wage labor sector, and 10% are engaged in non-agricultural self-employment.¹⁸

Approximately 60% of women in the control group have had at least one child.

We find substantial impacts of deworming treatment on labor supply. In particular, among all individuals surveyed in KLPS-2, mean hours worked increased by 1.76 hours (s.e. 0.97 hours, Table 3, Panel A) on a control group mean of 15.2 hours, a 12% increase significant at 90% confidence. However, approximately 25% of our sample was still enrolled in school at the time of survey, and few of these individuals participate in wage labor or non-agricultural self-employment. When assessing labor supply impacts in the remainder of Table 3 and the analysis that follows, we focus on those respondents who are not still enrolled in school as the relevant population. As noted above, nearly identical proportions of respondents in the treatment and control groups are no longer enrolled in school, at roughly 75%, and we cannot reject that observable characteristics are the same across groups (Appendix Table A1).

Among individuals who are enrolled in school, participation in traditional agriculture, wage- or self-employment is lower (Appendix Table A.4). For example, only 0.5% of the sample is both in school and work for wages. There is more overlap among some of the professions, as roughly a quarter of wage workers and half of those who identified as being self-employed in a non-agricultural field also did some agricultural work. Overall, 0.3% of the sample work for wages and in self-employment and 4% of the sample both work for wages and in agriculture. Among control group individuals in this subsample, 54% work on small family farms, 21% work in wage employment and 13% in non-agricultural self-employment.

On average, individuals working on family farms work 10 hours per work, those working in wage employment work 47 hours per week, and those in non-agricultural self-employment work upwards of 38 hours per week. The fraction of women who have ever had a child is substantially higher in the out-of-school sample, at nearly 73% among control individuals, though treated

¹⁸ Note that there is some overlap among these groups, so percentages will not add up to 1.

individuals in this subsample have fewer pregnancies (coefficient -0.14, s.e. 0.08, significant at 90%, on a control group mean of 1.3 pregnancies).¹⁹

The treatment impacts for this subsample are somewhat larger. Among those no longer enrolled in school, hours worked increase substantially in the deworming treatment group. Mean hours worked increased by 3.10 hours (s.e. 1.21, Table 3, Panel A) on a control group mean of 18.5 hours, a 17% increase that is significant at 95% confidence. Much of this increase is driven by an increase in full-time work of at least 35 hours per week, which rises by 5.1 percentage points (s.e. 2.3, 95% confidence) on a base of 21.5 in the control group. In contrast, there is no significant change in the proportion in the treatment group working at all (greater than zero hours in the past week), which is roughly three quarters of those not still in school. There is thus a considerable degree of “non-activity” – roughly one fifth of the full sample – for a young adult population (although some are engaged in home production or child-rearing that is not classified as work here).²⁰ In the full sample, females are more likely to be classified as non-active (25% vs. 14% for males) which is likely due to the fact that more than 75% of females who are not in school have experienced at least one pregnancy.

We find no significant evidence that deworming impacts on hours worked differ by gender or individual age at baseline (Table 4, columns 1-2). Empirically, we find that gains in hours worked are significantly larger in areas with higher initial infection rates (Table 4, column 3), at 2.1 hours (s.e. 0.9 hours). We also find that the results in column 3 are driven by areas with high schistosomiasis infection rates, as opposed to geohelminth (Table 4, column 4). We use the zonal-level baseline infection rate, rather than individual-level data (which was not collected at baseline for the control group for ethical reasons); using zonal averages is likely to introduce measurement error and attenuation bias, and thus this interaction effect is likely to understate true effects.

¹⁹ We find no effect of deworming treatment on the likelihood of pregnancy or live birth by the time of survey.

²⁰ Note that “non-activity” is defined here as those not in school or employed in traditional agriculture, wage labor or self-employment.

We next focus on those who worked at all in the last week, by employment sector. The distributions of hours worked (in all occupations), as represented in kernel densities, for the treatment and control groups are presented in Figure 2, panel A, and by employment sector in panels B-D. There are some visible shifts in the treatment group distribution to the right overall that appear to be driven almost entirely by those not employed in agriculture (either self-employed or wage work). In both the self-employed subsample (panel C) and the wage-earning subsample (panel D), more treatment respondents work approximately full-time (more than 35 hours per week), with fewer working part-time.

The concentration of work hour gains among those in non-agricultural employment is confirmed in the regression analysis. Hours in agriculture increase by 1.1 hours (s.e. 0.66, significant at 90%) in the treatment group on a base of 9.8 hours per week in the control group. This modest increase is consistent with the idea that the marginal product of labor in traditional agriculture is quite low (Lewis 1954). The typical person with positive hours in agriculture worked less than ten hours in the last week, echoing earlier studies (e.g., Fafchamps 1993), and even in peak planting and harvest months (not shown) hours per week do not exceed 12. Among those working outside of agriculture, the deworming treatment group worked 5.0 more hours (significant at 95% confidence), an increase of 11% on a base of 44.6 hours. There are even larger increases in hours worked in non-agricultural self-employment in the last week, at 6.7 hours (s.e. 3.0) on a base of 38.2 hours, or 18%. There are similarly large hours gains among wage earners, at 4.53 hours (s.e. 2.67) on a base of 47.3 hours per week. This magnitude is similar to the difference between weekly work hours in the United States versus France (OECD 2010).

Some of these gains may be the result of improved health boosting individual work capacity among wage earners: while impacts in the full sample of labor market participants are negative but not significant at traditional levels (point estimate -0.062, s.e., 0.165), among wage earners the

number of days lost to poor health in the last month falls by more than a third, or 0.526 of a day per month (s.e. 0.250), in the treatment group, accounting for one fifth of the increase in total hours.

Point estimates suggest externalities for schools neighboring treatment schools, although only some of the coefficients are statistically significant. Point estimates are positive but not significant for hours worked in all activities among those not still enrolled in school, with a t-statistic above one (1.71, s.e. 1.44). Among those working positive hours, there are statistically significant spillovers on total hours (3.51 hours, s.e. 1.58), hours worked outside of agriculture, hours worked in non-agricultural self-employment, and for wages. The externality effects are large in magnitude: an increase of one standard deviation in the local density of treatment school pupils (917 pupils), equivalent to treating 20% of the local primary school population, which Miguel and Kremer (2004) found led to large drops in worm infection rates, is associated with an increase of three work hours per week.

An interesting methodological question is the extent to which the results we present here would differ had the survey data collection not included efforts to track respondents living outside the original study district. While individuals found in the “intensive” tracking phases do differ significantly on mean observable characteristics (see supplementary appendix Table A5), we cannot reject that treatment effects are unchanged among this subsample.

4.4 Impacts on employment sector, occupation, and migration

Treatment does not lead to significant shifts in rates of employment in agriculture on the one hand and non-agricultural (small business and wage) employment on the other. However, within these sectors, treatment leads respondents to shift from food crops to cash crops, and from less remunerative occupations where part-time work is common to better-paid, full-time jobs in fields such as manufacturing.

The rates of agricultural, non-agricultural self-employment and wage earning work are nearly identical across the deworming treatment and control groups (Table 5, Panel A). The most common employment sector is farming (53.6% in the control group), as expected in rural Kenya. 21.0% of respondents worked for wages in the last month²¹ (and 24.4% at some point since 2007), while 13.3% of respondents were currently self-employed outside of farming.

Among those who work primarily on their own farm, there is evidence that deworming led to a shift towards cash crops (e.g., cotton, sugar, and tobacco) and away from traditional staple crops: the effect is 1.7 percentage points (s.e. 0.9) on a very low base of 1.3 percent in the control group, for a doubling of the proportion in the control group.

Treatment also leads to pronounced shifts in the occupation of employment among wage earners, out of relatively low-skilled and low-wage sectors into better paid sectors (Table 5, Panel B). Deworming treatment respondents are three times more likely to work in manufacturing from a low base of 0.031 (coefficient 0.067, s.e. 0.025). The gains among males are particularly pronounced at 0.082 (s.e. 0.033). Survey responses indicate that the two most common types of manufacturing jobs in our sample are in food processing and textiles, with establishments ranging in size from small local corn flour mills up to large blanket factories in Nairobi. On the flip side, casual labor employment falls significantly (-0.041, s.e. 0.019), as does domestic service work for females (-0.190, s.e. 0.113). Not surprisingly given these shifts in occupation of employment, a somewhat larger proportion of treatment group wage earners live in urban areas (not shown).

Manufacturing jobs tend to be quite highly paid, with average real monthly earnings of 5,311 Shillings (roughly US\$68), compared to casual labor (2,246 Shillings) and domestic services (3,047 Shillings). Manufacturing jobs are also characterized by somewhat longer work weeks than average at 53 hours per week, in contrast to 43 hours for all wage earning jobs. Workers in manufacturing

²¹ A small proportion (2%) of those who work for wages do so in agriculture. We do not classify these people as in traditional agriculture.

jobs also tend to have relatively few work days missed due to poor health, at just 1.1 days (in the control group), compared to 1.4 days among all wage earning jobs. One explanation for this pattern that ties into our earlier labor supply findings is that health investments improve individuals' capacity to carry out physically demanding jobs, characterized by long work weeks and little tolerance of absenteeism, and thus allow them to access higher paid jobs such as those in manufacturing. Casual laborers typically do not have to commit to work a certain number of days in a week in advance, so the significant reduction in casual work is also consistent with the hypothesis that deworming helps people obtain jobs that require regular attendance.

Just as deworming treatment does not appear to affect broad sources of income (i.e., agriculture versus non-agriculture), but does lead to shifts within each sector, treatment does not affect overall migration rates but there is some evidence that it leads respondents to migrate further from their homes. As illustrated in Table 6 (and the map in Appendix Figure A1), roughly 30% of respondents resided outside of Busia District in 2007-09, with rates roughly balanced between the treatment and control groups.²² However, treatment group respondents are somewhat more likely to live at least 500 km away from Busia, primarily due to greater likelihood of moving to Mombasa, Kenya's main port, with an increase of 1.7 percentage points (s.e. 1.0) on a base of 3.1 percent in the control group. This tendency for treatment group respondents to live farther away from the home district may capture greater effort exerted in the job search process. While the point estimates are not significant at traditional confidence levels, there is suggestive evidence that treatment individuals are somewhat more likely (5.3 percentage points) to move to a city for a job or to look for work.

4.5 Impacts on production and living standards

²² Since the individuals we did not find, and thus did not obtain residential information for, are plausibly even more likely to have moved out of the region, these figures almost certainly understate true out-migration rates.

Just as we decompose the increase in overall hours into changes in hours in agriculture, non-agricultural self-employment, and hours working for wages, it is useful to separately estimate treatment impacts on output and productivity in each sector.

The impact on wage earners is perhaps easiest to measure. Here point estimates of the increase in earnings are larger than those of the increase in hours, consistent with the hypotheses that certain jobs require higher numbers of work hours, worked on a regular schedule, and that these jobs are better paying. It is also consistent with the idea that people adjust their work effort along intensive as well as extensive margins, as we find some evidence for wage gains.

Treatment shifts the distribution of log wage earnings sharply to the right (Figure 3, Panel A).²³ In the regression analysis, we find that deworming treatment leads to higher log earnings (Table 7), with a gain of 23.0 log points (s.e. 7.3), with results unchanged if we do not use the log transformation (results not shown); with and without regression controls (columns 1 and 2); and when cross-school externalities are accounted for (column 3). In our preferred specification with the full set of regression controls and accounting for cross-school externalities (column 3), the impact is 30.1 log points (s.e. 9.1, 99% confidence). The earnings result is robust to several alternative specifications. It changes little in response to trimming the top 1% of earners, so the result is not driven by outliers; to including a full set of gender-age fixed effects; to including fixed effects for each of the “triplets” of Group 1, Group 2 and Group 3 schools from the list randomization, and considering cross-school cost-sharing externalities (Appendix Table 6).

A decomposition along the lines of Oaxaca (1973) indicates that over 75% of the increase in labor earnings for the treatment group (Table 7), and nearly 13% of the increase in hours worked (Table 3), can be explained by the occupational shifts documented in Table 5. While there are

²³ Here and below we present real earnings measures that account for the higher prices found in the urban areas of Nairobi and Mombasa. We collected our own comparable price surveys in both rural western Kenya and in urban Nairobi during the administration of the KLPS-2 surveys, and base the urban price deflator on these data. Results are unchanged without this price adjustment, however.

standard errors around these estimates and thus the exact figures should be read cautiously, they indicate that the bulk of the earnings gains can be accounted for by such shifts. This is consistent with the hypothesis that an increase in labor supply allows people to take jobs that require regular, full-time work and that this in turn allows them to earn more per hour.

There is suggestive evidence for deworming externalities on earnings. While the coefficient estimate on the local density of treatment pupils is not significant at traditional confidence levels (22.8 log points, s.e. 16.3, in Table 7, column 3), it reassuringly has the same sign as the main deworming treatment effect, and a substantial magnitude: an increase of one standard deviation in the local density of treatment school pupils, or roughly 20% of the local primary school pupils, would boost labor earnings by roughly $(917/1000) \times (22.8 \text{ log points}) = 20.9 \text{ log points}$.

As shown in Table 8, using our preferred specification with the full set of regression controls (equivalent to equation 6, and as in column 3 in Table 7), log wages computed as earnings per hour worked rise 20.3 log points (s.e. 11.1) in the deworming treatment group, and the effect is significant at 90% confidence. These results are also robust to trimming the top 1% of wages and to including a full set of gender-age fixed effects (not shown).

Positive wage earnings impacts are similar in the larger group of respondents, 24.4% of the full sample, who have worked for wages at any point since 2007, where we use their most recent monthly earnings if they are not currently working for wages. The mean impact on log earnings is 0.211 (s.e. 0.072), and there is once again suggestive evidence of positive externality effects (0.170, s.e. 0.116, Table 8, Panel B).

We find no significant evidence that deworming impacts on labor earnings or number of meals eaten differ by gender or individual age at baseline (Appendix Table A7). Similar to the hours worked results shown in Table 4, we find that gains in labor earnings are significantly larger in areas

with schistosomiasis infection rates (Appendix Table A7, column 4). Number of meals eaten yesterday are no larger in areas with higher initial infection rates (column 6).²⁴

Point estimates of the percentage increases in profits among owners of non-agricultural businesses are similar to the percentage increases in earnings among wage earners, but are estimated with less precision, partly because fewer people work in the sector and partly because the underlying variance of reported profits is higher than that of reported wages (presumably due to a combination of stochastic variation and measurement error). The estimated deworming treatment effect on the profits of the self-employed (as directly reported in the survey) is positive at 409 Shillings (s.e. 313, Table 8, Panel C), although this 23% gain is not significant at traditional confidence levels.²⁵ Trimming the top 5% of self-reported profits results in a similarly sized but significant treatment effect of Ksh 407 (s.e. 176, significant at 95% confidence). We also find substantial impacts on the total number of employees hired (0.641 additional employees on a base of 0.189, s.e. 0.374, significant at 90%). Since measured profits are somewhat noisy, we estimate the mean effect size of three different profit measures (including self-reported profits in the last month, self-reported profits in the last year, and profits calculated from revenues and expenses reported in the survey) and total employees hired, and find that the resulting estimate is positive, relatively large and statistically

²⁴ Deworming does not seem to affect the likelihood that people become wage earners or the process by which observable characteristics influence the likelihood of becoming a wage earner. In Table 5, we found no evidence that deworming treatment respondents are more likely to be working for wages or in-kind payments in the last month (Panel A, estimate -0.006, s.e. 0.022). There is similarly no differential selection into the subsample who have worked for wages, at any point since 2007 by treatment group (Table 8, Panel B). We further confirm that we cannot reject that the observable characteristics of wage earners, including academic performance measures, are the same in the treatment and control groups (Appendix Table A2). These factors all point towards an interpretation of the difference in labor earnings between the deworming treatment and control groups primarily reflecting causal treatment, rather than a selection effect. Further evidence is provided by a Heckman (1979) approach explicitly modeling the process of selection into wage earning. We use a marital status indicator and marital status interacted with gender as variables that predict selection into earning but are excluded from the earnings regression; marital status is strongly positively (negatively) correlated with any wage earning among males (females), results not shown. Keeping in mind the standard caveats to selection correction models, this approach yields an almost unchanged estimated impact on log wage earnings (not shown).

²⁵ There are large, positive but not statistically significant impacts on a monthly profit measure based directly on revenues and expenses reported in the survey (553 Shillings, s.e. 940) and reported profits in the last year (2,515 Shillings, s.e. 2,332). We focus here on self-reported profits, which appear to be less noisy.

significant at 95% confidence at 0.200 (s.e., 0.093), where the magnitude is interpretable as 0.200 standard deviations of the normalized control group distribution.

We next construct a measure of total monthly non-agricultural earnings by summing wage earnings and self-employed profits among all of those not still in school, and estimate a treatment effect of 245 Shillings (s.e. 136, significant at 90%, Table 8 Panel D) on a base of 974 shillings in the control group, for a 25% increase. These results are even larger when the top 5% of non-agricultural self-employment profits are trimmed (Ksh 449, s.e. 258, significant at 90%). The majority of this sample has zero non-agricultural earnings, making this a particularly stringent test. Creating a corresponding measure of wages does not provide results significant at standard confidence levels.

Unfortunately, we do not have a measure of agricultural yield or output agriculture analogous to the wages or profits of those working in other sectors. In any case, measuring the on-farm productivity of an individual worker in the context of a farm where multiple household members (and sometimes hired labor) all contribute to different facets of the production process is difficult. We also lack sufficiently detailed information on farming choices to compute a reliable yield measure, and thus rely on proxies for productivity. There is no indication that deworming led to higher crop sales in the past year (Table 8, Panel E). The failure to find increased crop sales may, in part, be due to the fact that households are consuming more of the grain they produced, as suggested by the increase in meals eaten (as discussed below). We do find suggestive evidence of increased adoption of “improved” agricultural practices including fertilizer, hybrid seeds, or irrigation, with an increase of 4.7 percentage points (s.e. 2.7) on a base of 29.5 percent, suggesting somewhat greater agricultural productivity. While these results should be taken with a grain of salt as we cannot easily measure individual on-farm productivity, they suggest there were modest improvements in agricultural productivity, consistent with the finding of small increases in hours worked in agriculture (Table 3).

Consumption is commonly used to assess living standards in rural areas of less developed countries, where most households engage in subsistence agriculture rather than wage work. We do not have complete data from a consumption module²⁶, but did collect data on the number of meals consumed. Deworming treatment respondents consume 0.096 more meals per day (s.e. 0.028, 99% confidence, Table 9) than the control group, and the externality impact is also large and positive (0.080, s.e. 0.023, 99% confidence). Among those not still enrolled in school, the gains are nearly identical, at 0.103 additional meals (s.e. 0.029) with an externality gain of 0.101 (s.e. 0.032).

There are statistically significant improvements in meals eaten for those working in all employment sectors, and mirroring the hours worked and productivity results, the gains are largest outside of agriculture. Deworming led to an increase of 0.205 meals eaten (s.e. 0.059) among wage earners and the non-agriculturally self-employed, with large externality effects of 0.180 (s.e. 0.067) meals. There was a smaller, though still statistically significant, gain of 0.076 meals (s.e. 0.035) among those engaged in household agriculture. This suggests that the labor market gains documented for respondents in the non-agricultural sector (relative to agriculture) translate into higher living standards, as well. It worth noting that some of the additional calories may be required by increased physical effort, as suggested by Deaton and Drèze (2008)

4.6 Constrained Estimation Results

In the previous sections, we estimated both the direct and externality effects of deworming treatment, allowing each parameter to vary freely. Here we estimate a model in which we constrain the impact of three years treatment, two years of treatment, and cost-sharing to be linear in treatment intensity (defined as the fraction of people treated times the number of years of treatment), and the externality

²⁶ A consumption expenditure module was collected as a pilot for roughly 5% of the KLPS-2 sample during 2007-09, for a total of 254 complete surveys. The estimated treatment effect for total consumption is near zero and not statistically significant (-\$14, s.e. \$66), but the confidence interval is large and includes substantial gains, since average consumption levels are \$580.

impacts from each of these programs to be proportional to both treatment intensity and the reduction in worm infection levels documented in Miguel and Kremer (2004) and some additional parasitological data. The linearity assumption is restrictive, but it allows us to simultaneously use all sources of exogenous variation in deworming treatment to estimate impacts. We use a two-sample instrumental variable (TSIV) approach, where the endogenous variable is the predicted number of years with moderate-heavy infections between 1998 and 2001.

As mentioned above, we are reluctant to interpret these estimates as structural estimates of the impact of eliminating a moderate-heavy worm infection for one year since there may also be effects of reducing worm load that do not lead to crossing the threshold of moderate-heavy infection, and since effects may also be due to complementarities in school attendance between children. Using this method, Table 10 displays the deworming effort associated with eliminating a moderate-heavy infection is associated with significant changes in hours worked (4.91 hours per week, s.e. 1.85), log labor earnings (47.8 log points, s.e. 12.5), and meals eaten (1.28, s.e. 0.044), and all of these estimates are statistically significant at 95% confidence.

A benefit of this approach is that the availability of multiple instruments allows us to carry out over-identification tests, in this case, implemented in GMM (among those with 2001 parasitological data) to generate the Hansen J-statistic. The p-values on this test are 0.581, 0.394, and 0.252 for the three dependent variables (hours worked, log labor earnings, and meals eaten, respectively), indicating that we cannot reject the assumption that deworming impacts are in fact proportional to health gains as measured by reductions in moderate-heavy worm infections.

5. Socially Optimal Subsidies for Deworming

We first calibrate a Grossman (1972) style model, using changes in the observed hours worked in our data to compare the social welfare under full deworming subsidies, partial subsidies, and no subsidies, under the model of Section Two, which assumes fully informed rational agents. We then

consider a “health planner” perspective, setting aside traditional welfare economics based on revealed preference, and calculate the social rate of return to deworming as a human capital investment in section 5.2. In both cases, we conclude that large subsidies for deworming are justified.

5.1 Calibrating the health investment model

It is possible to calibrate the model with our data on the impact of deworming on hours worked and data from Kremer and Miguel (2007) on price responsiveness. A lower bound on the utility gain associated with any given level of deworming subsidy is given by ignoring all wage productivity gains and assuming that all those who dewormed at a given price level had sufficiently high disutility from deworming, m_i , that they were just indifferent between deworming and not deworming. In this case, the utility gain from a higher subsidy consists only of the increase in take-up times the externality benefit of increased take-up. Note that by assuming that those who take deworming themselves do not personally benefit, this procedure abstracts from credit market imperfections, behavioral issues, and failures of intra-household bargaining, all of which could plausibly lead households to further under-consume deworming.

For concreteness, in what follows we assume that $\alpha = \frac{1}{3}$, although the magnitudes of the results are not sensitive to other values.²⁷ We calculate the hourly earnings in non-agricultural work (either wage work or self-employment) as \$0.29 per hour. From Table 3, we estimate that if an extra person dewormed, those within 6 km of them (and who are not currently in school) are currently working an extra 0.00171 hours a week. Since people only work a third of their total healthy time, it implies a daily increase of 0.000733 hours of healthy time a day. This is equivalent to a utility gain in the model of $0.000733 \times \text{US}\$0.19 \times (365 \text{ days}) = \text{US}\0.08 in money-metric utility terms in the first

²⁷ Working 2,000 hours per year corresponds to $\alpha = 0.34$, assuming people are endowed with 16 hours of healthy working time per day.

year. We assume that earnings first rise and then gradually fall over the life cycle in an inverted-U shaped manner, as documented by Knight, Sabot, and Hovey (1992) for Kenyan labor markets, with earnings increasing proportionally in the deworming treatment group. With an annual discount rate of 10%, and labor force participation for 40 years, we estimate that the NPV of the externality benefit for each person affected is US\$0.35 (starting discounting 10 years before labor earnings start, since deworming was done in 1998 and we start observing labor earnings a decade later). From Table 1, each person who is dewormed generates externality benefits for an average of 4,709 others (those who attended school within 6 km), so under our assumption of additively separable externality effects, the total externality utility benefit per person who actually deworms is $US\$0.35 * 4,709 = US\1637 .

We use current estimates of per pupil mass treatment costs (provided by the NGO Deworm The World) of US\$0.59 per year. This cost incorporates the time of personnel needed to administer drugs through a mass school-based program, and accounts for the fraction of our sample that requires treatment with the more expensive drug for schistosomiasis (praziquantel). The total direct deworming cost then is the 2.41 years of average deworming in the treatment group times US\$0.59, or US\$1.42. Under partial subsidies (the 2001 cost-sharing program), individuals paid \$.27 for the medicine, so the direct cost to the government was \$1.15.

Taken together, these figures allow us to estimate the expected welfare costs and benefits of targeting one additional person for deworming at various subsidy levels, and the level of deadweight loss that would make that level of subsidy less socially beneficial than no government intervention (or a lower subsidy level). Table 11, Panel A lays out the results. The first column presents the price for deworming drugs paid by individuals under the three subsidy regimes: no subsidy, partial subsidy and full subsidies for deworming. Drawing on Kremer and Miguel (2007), the second column presents the take-up levels that resulted from these prices, with sharply declining take-up at higher prices, and the next column presents the average subsidy price per targeted student, taking into

account that actual spending is low in the case of partial subsidies since take-up is so low. The fourth column presents the total utility benefits generated by deworming externalities (in money-metric terms) under each of the three subsidy regimes, as described above.

The final column presents the deadweight loss that would be needed to have the costs per capita outweigh the benefits, and it is immediate that they are massive, with DWL in the thousands of percent in all cases. In particular, the full subsidy case generates higher aggregate utility than either the partial or no subsidy cases for DWL rates up to 100,000%), which is far above the rates that are considered realistic.

5.2 Deworming as a human capital investment

An alternative approach is to calculate the internal rate of return (IRR) on deworming investments to assess its relative benefits and costs, including for those who took deworming themselves. This approach complements the Grossman-style (1972) model calibration presented above by incorporating both direct benefits to those who take deworming drugs, and the gains due to higher individual wage productivity.

On the benefits side, we consider the earnings gains estimated over 40 years of an individual's work life, making the same assumptions on lifecycle earnings in Kenya, as above. We make several assumptions that imply that our rate of return estimates are lower bounds on the true returns to deworming. An important assumption in some calculations is that only those working in non-agricultural employment (34% of those not still in school) will experience improved living standards as a result of deworming. Disregarding living standards gains experienced by those in agriculture is conservative given that the number of meals eaten rose in this subsample. There may also be broader community-wide benefits to deworming among those not of school age, for example, among the younger siblings of the treated (Ozier 2010). We conservatively also ignore these gains.

As outlined above, cost for 2.41 years of treatment is approximately \$1.42. Multiplying by the average compliance rate (46% in treatment schools, accounting for cost-sharing years and the fact that some of the sample ages out of primary school each year) gives an average cost of \$0.65 per treatment pupil and \$0.44 per pupil in the full sample (Table 11, Panel B). Auriol and Walters (2009) suggest that deadweight loss is around 20%, so we estimate an average total cost per student in the treatment schools of \$0.53.

Under these assumptions, the average gain in total lifetime earnings (undiscounted) from deworming treatment per pupil in the PSDP sample is \$2,961 (Table 11, Panel B).²⁸

An estimated IRR of 81.7% is obtained by considering the increase in total earnings, and treating time spent in school as having no net benefits or costs beyond the impact on earnings. The interpretation is that a social planner with an annual discount rate or cost of capital of less than 81.7% would choose to invest in deworming as a human capital investment. For reference, at the time of writing nominal commercial interest rates in Kenya are 10-12% per annum, the rate on long-term sovereign debt is 11% and inflation is 3% (according to the Central Bank of Kenya).²⁹ Deworming appears to be an attractive investment given the real cost of capital in Kenya.

We have so far focused on those working outside of agriculture because their productivity gains are more accurately measured than those in agriculture. As a growing share of our sample has obtained non-agricultural employment over time (appendix figure A2), this may be a conservative assumption. If we abandon this assumption and assume that the full sample experienced analogous living standard gains, the social internal rate of return would be much larger.

²⁸ The other potential component of costs is the opportunity cost of time spent in school rather than doing something else, presumably working. We focus on the case where all of the additional days spent in school were due to an increase in non-sick time, as in the Grossman (1972) framework. An alternative assumption is that all days of additional schooling came at the expense of days worked. This would be an upper bound on the actual opportunity cost of time, if school participation instead increased at least in part because children were simply sick less often. The internal rate of return figures remain large even under this more conservative assumption (not shown).

²⁹ This figure was obtained at: <http://www.centralbank.go.ke/> (accessed November 1, 2010).

6. Conclusion

The Kenya Primary School Deworming Program was experimentally phased-in across 75 rural schools between 1998 and 2001 in a region with high rates of intestinal worm infections, one of the world's most widespread diseases. As a result, the treatment group exogenously received an average of two to three more years of deworming treatment than the control group. A representative subset of the sample was followed up for roughly a decade through 2007-09 in the Kenya Life Panel Survey, with high survey tracking rates, and the labor market outcomes of the treatment and control groups are compared to assess impacts.

There were large increases in average hours worked (by 17%) as a result of deworming. There are sharp shifts in employment towards jobs that require full-time regular work, and have higher wages, notably towards manufacturing sector jobs (especially for males) and away from casual labor and domestic services employment (for females). As a result, among those working for wages average earnings rise by over 20%. These findings complement Bleakley's work on historical deworming programs in the U.S. South in the early 20th century, and the correspondence between the two sets of results – using distinct research designs and data – increases confidence in both findings.

The finding that shifts into different employment sectors account for the bulk of the earnings gains suggests that characteristics of the broader labor market – for instance, sufficient demand for manufacturing workers – may be critical for translating better health into higher living standards. We cannot decompose how much of our labor market impacts are working through health versus education without imposing strong assumptions, but both channels may play a role.

The finding that shifts into different employment occupations account for the bulk of the earnings gains suggests that characteristics of the broader labor market – for instance, sufficient demand for manufacturing workers – may be critical for translating better health into higher living standards. Our finding of considerable labor market impacts (outside of the agricultural sector) suggests that Kenyan labor markets are more flexible than is often believed.

The social returns to child deworming treatment appear high using an approach based on calibration the Grossman (1972) model, or an alternative social planner approach, where the latter generates a conservative annualized social internal rate of return of 82.7%. The estimates suggest that the externality benefits alone justify fully subsidizing school-based deworming. It goes without saying that deworming alone, and its associated increase in earnings, cannot make more than a small dent in the large gap in living standards between poor African countries like Kenya and the world's rich countries. Yet that obvious point does not make deworming any less attractive as a public policy option given its extraordinarily high social rates of return, and the fact that boosting incomes by roughly a quarter would have major welfare impacts for households living near subsistence.

References

- Abudu, F. (1986). "Work attitudes of Africans, with special reference to Nigeria", *International Studies of Management and Organization*, 16(2), 17-36.
- Alderman, Harold, John Hoddinott, Bill Kinsey. (2006a). "Long-term consequences of early childhood malnutrition," *Oxford Economic Papers* 58, 450-474.
- Alderman, Harold, J. Konde-Lule, I. Sebuliba, D. Bundy, A. Hall. (2006b). "Increased weight gain in preschool children due to mass albendazole treatment given during 'Child Health Days' in Uganda: A cluster randomized controlled trial", *British Medical Journal*, 333, 122-126.
- Alderman, Harold. (2007). "Improving nutrition through community growth promotion: Longitudinal study of nutrition and early child development program in Uganda", *World Development*, 35(8), 1376-1389.
- Almond, Douglas and Bhashkar Mazumder (2008). "Health Capital and the Prenatal Environment: The Effect of Maternal Fasting during Pregnancy", *NBER WP#14428*.
- Almond, Douglas, and Janet Currie. (2010). "Human Capital Development Before Age Five", NBER Working Paper #15827.
- Angrist, Joshua and Jorn-Steffen Pischke. (2008). *Mostly Harmless Econometrics: An Empiricist's Companion*. Princeton University Press.
- Ashraf, Nava, James Berry, and Jesse M. Shapiro. (2010). "Can high prices stimulate product use? Evidence from a field experiment in Zambia", *American Economic Review*, 100(5), 2383-2413.
- Auriol, Emmanuelle, and Michael Walters. (2009). "The Marginal Cost of Public Funds and Tax Reform in Africa", unpublished working paper, University of Toulouse.
- Baird, Sarah, Joan Hamory, and Edward Miguel. (2008) "Attrition and Migration in the Kenya Life Panel Survey." University of California, Berkeley CIDER Working Paper.
- Beegle, K., J. De Weerd, S. Dercon. (2010). "Migration and Economic Mobility in Tanzania: Evidence from a Tracking Survey", forthcoming *Review of Economics and Statistics*.
- Behrman, Jere. (1996). "The Impact of Health and Nutrition on Education," *World Bank Research Observer*, vol. 11(1), 23-37.

- Behrman, Jere R., Maria Cecilia Calderon, Samuel Preston, John Hoddinott, Reynaldo Martorell and Aryeh D. Stein. (2009). "Nutritional Supplementation of Girls Influences the Growth of their Children: Prospective Study in Guatemala", *American Journal of Clinical Nutrition*, 90 (November), 1372-1379.
- Bleakley, Hoyt. (2007). "Disease and Development: Evidence from Hookworm Eradication in the American South." *Quarterly Journal of Economics*, 122(1):73-117.
- Bleakley, Hoyt. (2010). "Health, Human Capital, and Development". *Annual Review of Economics*, 2, 283-310.
- Brook, Robert H., John E. Ware, William H. Rogers, Emmett B. Keeler, Allyson Ross Davies, Cathy D. Sherbourne, George A. Goldberg, Kathleen N. Lohr, Patricia Camp, Joseph P. Newhouse. (1984). *The Effect of Coinsurance on the Health of Adults: Results from the RAND Health Insurance Experiment*. RAND Corporation: Santa Monica, CA.
- Brooker, S., Miguel, E.A., Moulin, S., Luoba, A.I., Bundy, D.A.P. and Kremer, M. (2000a). "Epidemiology of Single and Multiple Species Helminth Infections among Schoolchildren in Busia District, Kenya", *East African Medical Journal*, 77, 157-161.
- Brooker, Simon, Megan Rowlands, Laurence Haller, Lorenzo Savioli, and Donald Bundy. (2000b) "Towards an Atlas of Helminth Infection in Sub-Saharan Africa: The Use of Geographical Information Systems (GIS)", *Parasitology Today*, 16(7), 303-307.
- Bruhn, Miriam and David McKenzie. (2009). "In pursuit of balance: Randomization in practice in development field experiments", *American Economic Journal: Applied Economics*, 1(4), 200-232.
- Bundy, D.A.P. (1994). "The Global Burden of Intestinal Nematode Disease." *Transactions of the Royal Society of Tropical Medicine and Hygiene*, 88, 259-261.
- Bundy, Donald A.P., Michael Kremer, Hoyt Bleakley, Matthew C.H. Jukes, and Edward Miguel. (2009). "Deworming and development: Asking the right questions, asking the questions right", *PLoS Neglected Tropical Diseases*, 3(1): e362. doi:10.1371/journal.pntd.0000362.
- Case, Anne, and Christina Paxson. (2010). "Causes and Consequences of Early Life Health", *Demography*, 47 (Supplement), S65-S85.
- Chattopadhyay, Raghendra, and Esther Duflo. (2004). "Women as policymakers: Evidence from a randomized policy experiment in India", *Econometrica*, 75(2), 1409-1443.
- Clark, Greg (1994). "Factory Discipline" *The Journal of Economic History* 54 (1):128-163
- Cohen, Jessica and Pascaline Dupas. (2010). "Free Distribution or Cost-Sharing? Evidence from a Randomized Malaria Prevention Experiment," *Quarterly Journal of Economics* 125 (1):1-45.
- Costa, Dora (2000) "The Wage and the Length of the Work Day: From the 1890s to 1991." *Journal of Labor Economics*. 18(1): 156-181.
- Crimmins, Eileen M., and Caleb E. Finch. (2005). "Infection, inflammation, height, and longevity", *Proceedings of the National Academy of Sciences*, 103(2): 498-503.
- Currie, Janet, Eliana Garces, and Duncan Thomas. (2002). "Longer Term Effects of Head Start", *American Economic Review*, 92(4), 999-1012.
- Currie, Janet. (2009). "Healthy, wealthy, and wise: Is there a causal relationship between child health and human capital development?", *Journal of Economic Literature*, 47(1), 87-122.
- Dasgupta, Partha, and Debraj Ray. (1986). "Inequality as a determinant of malnutrition and unemployment: theory", *Economic Journal*, 96, 1011-1034.
- de Silva, NR, Brooker S, Hotez PJ, Montresor A, Engels D, Savioli L. (2003). "Soil-transmitted helminth infections: updating the global picture" *Trends in Parasitology*, 19(12):547-51.
- Deaton, Angus and Jean Drèze (2008). "Food and Nutrition in India: Facts and Interpretations," *Economic and Political Weekly* 44 (7): 42-65
- Deaton, Angus. (2010). "Instruments, Randomization and Learning about Development", *Journal of Economic Literature*, 48, 424-455.

- Dupas, Pascaline. (2011). "Health Behavior in Developing Countries", *Annual Review of Economics*.
- Fafchamps, Marcel. (1993). "Sequential Labor Decisions Under Uncertainty: an Estimable Household Model of West African Farmers", *Econometrica*, 61(5): 1173-1197.
- Fernandez, R. and A. Fogli. (2009). "Culture: An empirical investigation of beliefs, work, and fertility", *American Economic Journal: Macroeconomics*, 1(1):146-177.
- Fincham, John E., M.B. Markus, and V.J. Adams. (2003). "Could control of soil-transmitted helminthic infection influence the HIV/AIDS pandemic?", *Acta Tropica*, 86(2-3), 315-333.
- Fox, Matthew P., Sydney Rosen, William B. MacLeod, Monique Wasunna, Margaret Bii, Ginamarie Foglia, and Jonathon L. Simon. (2004). "The impact of HIV/AIDS on labour productivity in Kenya", *Tropical Medicine and International Health*, 9(3), 318-324.
- Glewwe, Paul, Hanan G. Jacoby, Elizabeth M. King (2001). "Early childhood nutrition and academic achievement: a longitudinal analysis." *J. of Public Economics*, 81: 345-368.
- Government of Kenya. (1986). Kenya Socio-Cultural Profiles: Busia District, ed. Gideon Were (Nairobi: Ministry of Planning and National Development).
- Grossman, Michael. (1972). "On the Concept of Health Capital and the Demand for Health", *Journal of Political Economy*, 80(2), 223-255.
- Guyatt, H.L., Brooker, S., Kihamia, C.M., Hall, A. & Bundy, D.A. 2001, "Evaluation of efficacy of school-based anthelmintic treatments against anaemia in children in the United Republic of Tanzania", *Bulletin of the World Health Organization*, 79(8), 695-703.
- Haddock, Christopher K., Walker S.C. Poston, Sara A. Pyle, Robert C. Klesges, Mark W. Vander Weg, Alan Peterson, Margaret Debon. (2006). "The validity of self-rated health as a measure of health status among young military personnel: evidence from a cross-sectional survey", *Health and Quality of Life Outcomes*, 4(57).
- Hanna, Rema, and Paulina Oliva. (2011). "The Effect of Pollution on Labor Supply: Evidence from a Natural Experiment in Mexico City", *NBER Working Paper #17302*.
- Harris, Michael P., and John R. Harris. (1970). "Migration, Unemployment and Development: A Two-Sector Analysis", *American Economic Review*, 60(1), 126-142.
- Heckman, James. (1979). "Sample selection bias as a specification error", *Econometrica*, 47, 153-61.
- Heckman, James, Jora Stixrud, and Sergio Urzua. (2006). "The Effects of Cognitive and Noncognitive Abilities on Labor Market Outcomes and Social Behavior", *Journal of Labor Economics*, 24(3): 411-482.
- Hoddinott, John, John A. Maluccio, Jere R Behrman, Rafael Flores and Reynaldo Martorell. (2008). "The Impact of Nutrition During Early Childhood on Income, Hours Worked, and Wages of Guatemalan Adults", *Lancet*, 371 (February), 411-416.
- Hotez, P.J. & Ferris, M.T. (2006), "The antipoverty vaccines", *Vaccine*, 24(31-32), 5787-5799.
- Ichino, Andrea, and Enrico Moretti. (2009). "Biological Gender Differences, Absenteeism and the Earning Gap", *American Economic Journal: Applied Economics*, 1(1).
- Idler, Ellen L., and Yael Benyamini. (1997). "Self-rated health and mortality: A review of twenty-seven community studies", *Journal of Health and Social Behavior*, 38(1), 21-37.
- Jukes, Matthew C. H, Margaret Pinder, Elena L. Grigorenko, Helen Baños Smith, Gijs Walraven, Elisa Meier Bariau, Robert J. Sternberg, Lesley J. Drake et al. (2006). "Long-Term Impact of Malaria Chemoprophylaxis on Cognitive Abilities and Educational Attainment: Follow-Up of a Controlled Trial." *PLoS Clinical Trials*, 1(4): e19.
- Jukes, Matthew C. H., Lesley J. Drake, and Donald A. P. Bundy. *School Health, Nutrition, And Education for All: Levelling the Playing Field*. CABI Publishing, Wallingford 2007.
- Kirwan, P., Jackson, A.L., Asaolu, S.O., Molloy, S.F., Abiona, T.C., Bruce, M.C., Ranford-Cartwright, L., O'Neill, S.M. & Holland, C.V. 2010, "Impact of repeated four-monthly

- anthelmintic treatment on Plasmodium infection in preschool children: a double-blind placebo-controlled randomized trial", *BMC infectious diseases*, vol. 10, pp. 277.
- Knight, J.B., R.H Sabot, and D.C. Hovey. (1992). "Is the rate of return on primary schooling really 26 per cent?", *Journal of African Economies*, 1(2), 192-205.
- Kling, Jeffrey R., Jeffrey B. Liebman, Lawrence F. Katz. (2007). "Experimental Analysis of Neighborhood Effects." *Econometrica*, 75 (1) 83-119.
- Kremer, Michael, and Alaka Holla. (2009). "Pricing and Access: Lessons from Randomized Evaluations in Education and Health", in *What Works in Development: Thinking Big and Thinking Small*, eds. William Easterly and Jessica Cohen. Washington DC: Brookings Institution Press.
- Kremer, Michael, and Edward Miguel. (2007). "The Illusion of Sustainability", *Quarterly Journal of Economics*, 112(3), 1007-1065.
- Kremer, Michael, Christopher Snyder and Heidi Williams (2011). "Optimal Subsidies for Prevention of Infectious Disease," Working Paper. Harvard University.
- Lam, David, Cally Ardington, Nicola Branson, Anne Case, Alicia Menendez, Murray Leibbrandt, Jeremy Seekings, and Meredith Sparks. (2008). *The Cape Area Panel Study: Overview and Technical Documentation Waves 1-2-3-4 (2002-2006)*. Working paper, University of Michigan, University of Cape Town, and Princeton University.
- Lewis, W. Arthur. (1954). "Economic Development with Unlimited Supplies of Labor", *The Manchester School*, 22(2), 139-191.
- Maluccio, John A., John Hoddinott, Jere R. Behrman, Reynaldo Martorell, Agnes Quisumbing, Aryeh D Stein. (2009). "The Impact of Improving Nutrition During Early Childhood on Education among Guatemalan Adults." *Economic Journal*, 199 (537) 734-763.
- Miguel, Edward and Michael Kremer (2004). "Worms: Identifying Impacts on Education and Health in the Presence of Treatment Externalities." *Econometrica*, 72(1), 159-217.
- Oaxaca, Roger. (1973). "Male-Female Wage Differentials in Urban Labor Markets", *International Economic Review*, 14(3), 693-709.
- OECD Average annual hours actually worked per worker, 2010, found at <http://stats.oecd.org/Index.aspx?DataSetCode=ANHRS>
- Orr, Larry, Judith D. Ferris, Robin Jacob, Erik Beecroft, Abt. Associates Inc., Lisa Sanabonmatsu, Lawrence F. Katz, Jeffrey B. Liebman, Jeffrey R. Kling. (2003). *Moving to Opportunity: Interim Impacts Evaluation*. Washington D.C.: U.S. Dept. of HUD.
- Ozier, Owen. (2010). "Exploiting Externalities to Estimate the Long-Term Benefits of Early Childhood Deworming", unpublished working paper, U.C. Berkeley.
- Pitt, Mark M., Mark R. Rosenzweig, and Nazmul Hassan. (2011). "Human Capital Investment and the Gender Division of Labor in a Brawn-Based Economy", unpublished working paper.
- Prescott, Edward (2004), "Why do Americans work so much more than Europeans?", *Federal Reserve Bank of Minneapolis Quarterly Review*, 28 (1), 2-13.
- Pullan RL, Gething PW, Smith JL, Mwandawiro CS, Sturrock HJ, Gitonga CW, Hay SI, Brooker S. (2011). "Spatial modelling of soil-transmitted helminth infections in kenya: a disease control planning tool", *Public Library of Science (PLoS) Neglected Tropical Diseases*, Feb 8; 5(2):e958.
- Schapiro, Louis. (1919). "The Physical and Economic Benefits of Treatment for Hookworm Disease", *Journal of the American Medical Association*, Nov. 15, 1919, 73(20): 1507-09.
- Schultz, T. Paul. (2005). "Productive Benefits of Health: Evidence from Low-Income Countries", Yale Economic Growth Center Discussion Paper #903.
- Schultz, T. Paul and Aysit Tansel. (1997). "Wage and labor supply effects of illness in Cote d'Ivoire and Ghana: Instrumental variable estimates for days disabled", *Journal of Development Economics*, 53(2): 251-286.

- Smith, James P. (2009). "The Impact of Childhood Health on Adult Labor Market Outcomes", *Review of Economics and Statistics*, 91(3), 478-489.
- Stephenson, L.S., Latham, M.C., Adams, E.J., Kinoti, S.N. & Pertet, A. 1993, "Physical fitness, growth and appetite of Kenyan school boys with hookworm, *Trichuris trichiura* and *Ascaris lumbricoides* infections are improved four months after a single dose of albendazole", *The Journal of nutrition*, vol. 123, no. 6, pp. 1036-1046.
- Taylor-Robinson D, Jones A, Garner P. (2007) "Deworming drugs for treating soil-transmitted intestinal worms in children: effects on growth and school performance." *Cochrane Database of Systematic Reviews* 2007, 4, CD000371. doi:10.1002/14651858.CD000371.pub31.
- Thomas, Duncan, Elizabeth Frankenberg, James P. Smith. (2001). "Lost but not forgotten: Attrition in the Indonesia Family Life Survey," *J. of Human Resources*, 36(3), 556-592.
- Thomas, Duncan, Firman Witoelar, Elizabeth Frankenberg, Bondan Sikoki, John Strauss, Cecep Sumantri, Wayan Suriastini. (2010). "Cutting the costs of attrition: Results from the Indonesia Family Life Survey", forthcoming, *Journal of Development Economics*.
- Thomas, Duncan, et al. (2008). "Causal effect of health on social and economic prosperity: Experimental evidence", unpublished working paper, Duke University.
- Watson, J.L. & John-Stewart, G. 2007, "Treatment of Helminth Co-Infection in Individuals with HIV-1: A Systematic Review of the Literature", *PLoS Negl Trop Dis*, 1(3), pp. e102.
- Weisbrod, Burton A., Ralph L. Andreano, Robert E. Baldwin, Erwin H. Epstein, Allen C. Kelley, and Thomas W. Helminiak. (1973). *Disease and economic development: The impact of parasitic diseases in St. Lucia*. University of Wisconsin Press: Madison.
- World Bank. (2006). *Repositioning nutrition as central to development: a strategy for large-scale action*. World Bank, Washington DC.
- World Health Organization. (1992). *Model Describing Information. Drugs Used in Parasitic Diseases*. WHO, Geneva.

Table 1: Baseline (1998) summary statistics and PSDP randomization checks, and KLPS (2007-09) survey attrition patterns

	All mean (s.d.)	Treatment mean (s.d.)	Control mean (s.d.)	Treatment – Control (s.e.)	Kolmogorov- Smirnov p-value
Panel A: Baseline summary statistics					
Age (1998)	11.9 (2.6)	11.9 (2.6)	12.0 (2.6)	-0.04 (0.11)	0.258
Grade (1998)	4.23 (1.68)	4.22 (1.70)	4.25 (1.66)	-0.03 (0.05)	0.450
Female	0.470	0.469	0.473	-0.004 (0.019)	--
School average test score (1996)	0.029 (0.427)	0.024 (0.436)	0.038 (0.406)	-0.013 (0.109)	0.310
Primary school located in Budalangi division	0.370	0.364	0.381	-0.017 (0.137)	--
Population of primary school	476 (214)	494 (237)	436 (146)	58 (54)	0.307
Total treatment (Group 1, 2) primary school students within 6 km	3,180 (917)	3,085 (845)	3,381 (1,022)	-296 (260)	0.206
Total primary school students within 6 km	4,709 (1,337)	4,698 (1,220)	4,732 (1,555)	-34 (389)	0.119
Years of assigned deworming treatment, 1998-2003	3.31 (1.82)	4.09 (1.52)	1.68 (1.23)	2.41*** (0.08)	--
Panel B: Sample attrition, KLPS					
Found ^a	0.862	0.860	0.867	-0.007 (0.017)	--
Surveyed	0.825	0.824	0.827	-0.003 (0.018)	--
Not surveyed, dead	0.017	0.018	0.014	0.004 (0.004)	--
Not surveyed, refused	0.015	0.014	0.017	-0.003 (0.005)	--

Notes: The data in Panel A are from the PSDP, and includes all individuals surveyed in the KLPS2. There are 5,084 observations for all variables, except for Age (1998) where there are 5,072 observations due to missing survey data. All variables in Panel A are 1998 values unless otherwise noted. Years of assigned deworming treatment is calculated using the treatment group of the respondent's school and their grade, but is not adjusted for the treatment ineligibility of females over age 13 or assignment to cost-sharing in 2001. Those respondents who "age out" of primary school are no longer considered assigned to deworming treatment. The average school test score is from the 1996 Busia District mock exam, and has been converted to units of normalized individual standard deviations. The sample used in Panel B includes all individuals surveyed, found deceased, refused participation, found but unable to survey, and not found but sought in intensive tracking during KLPS2, a total of 5,569 respondents (3,686 treatment and 1,883 control). All observations are weighted to maintain initial

population proportions. The “Treatment – Control” differences are derived from a linear regression of the outcome on a constant and the treatment indicator, but results are similar if we include further controls (for survey wave, 1998 administrative zone of residence, cost sharing school indicator, and baseline 1998 population of the individual’s primary school). Standard errors are clustered by school. Significant at 90% (*), 95% (**), 99% (***) confidence. The Kolmogorov-Smirnov p-values are only presented for the non-binary variables, where it is informative.

^a The proportion “Found” is the combination of pupils surveyed, found deceased, refused and found but unable to survey. ^b Districts neighboring Busia include Siaya, Busia (Uganda), and other districts in Kenya’s Western Province.

Table 2: Impacts on health, nutrition and education outcomes (full sample)

Dependent variable	Control group variable mean (s.d.)	Coefficient estimate (s.e.) on deworming treatment indicator	Coefficient estimate (s.e.) on deworming Treatment school pupils within 6 km (in '000s), demeaned
Panel A: Health and education outcomes during 1998-2001			
Moderate-heavy worm infection (1999, 2001 parasitological surveys)	0.321 (0.467)	-0.245*** (0.030)	-0.075*** (0.026)
Hemoglobin (Hb) level (1999, 2001 parasitological survey samples)	126.1 (14.7)	1.03 (0.81)	0.91 (0.96)
Falls sick often (self-reported), 1999	0.154 (0.361)	-0.037** (0.015)	0.001 (0.014)
Total primary school participation, 1998-2001	2.51 (1.12)	0.127*** (0.064)	-0.115* (0.060)
Academic test score (normalized across all subjects), 1999	0.026 (1.000)	0.059 (0.090)	0.158 (0.101)
Panel B: Health and nutrition outcomes, KLPS (2007-09)			
Self-reported health "very good"	0.673 (0.469)	0.041** (0.018)	0.028 (0.022)
Height (cm)	167.3 (8.0)	-0.12 (0.26)	-0.39 (0.33)
Panel C: Education outcomes, KLPS (2007-09)			
Total years enrolled in school, 1998-2007	6.69 (2.97)	0.279* (0.147)	0.138 (0.149)
Grades of schooling attained	8.72 (2.21)	0.153 (0.143)	0.070 (0.146)
Indicator for repetition of at least one grade (1998-2007)	0.672 (0.470)	0.060*** (0.017)	0.010 (0.023)
Enrolled in school in year of 2007-09 survey	0.252 (0.434)	0.003 (0.022)	-0.045* (0.026)
English vocabulary test score (normalized), 2007-09	0.000 (1.000)	0.076 (0.055)	0.067 (0.053)
Passed primary school leaving exam during 1998-2007	0.505 (0.500)	0.048 (0.031)	0.032 (0.029)
<i>Restricting to out-of-school sample:</i>			
English vocabulary test score (normalized), 2007-09	-0.232 (0.972)	0.107** (0.052)	0.149*** (0.047)
Passed primary school leaving exam during 1998-2007	0.413 (0.493)	0.061* (0.032)	0.083*** (0.028)

Notes: The sample size in Panel A is 2,720 for worm infection, 1,765 for Hb, and 3,861 for health self-reports. Representative subsets of pupils in all schools were surveyed for these 1999 and 2001 pupil surveys. The sample in Panels B, C and D includes all individuals surveyed in KLPS-2, and the rows underneath “*restricting to out-of-school sample*” further condition on not being enrolled in school in the year of survey. Each row is from a separate OLS regression analogous to equation 4. All observations are weighted to maintain initial population proportions. Standard errors are clustered by school. Significant at 90% (*), 95% (**), 99% (***) confidence. All regressions include controls for baseline 1998 primary school population, geographic zone of the school, survey wave and month of interview, a female indicator variable, baseline 1998 school grade fixed effects, the average school test score on the 1996 Busia District mock exams, total primary school pupils within 6 km, and the cost-sharing school indicator. Self-perceived health “very good” takes on a value of one if the answer to the question “Would you describe your general health as somewhat good, very good, or not good?” is “very good”, and zero otherwise.

Table 3: Deworming impacts on labor supply (out-of-school sample)

Dependent variable	Control group variable mean (s.d.)	Coefficient estimate (s.e.) on deworming Treatment indicator	Coefficient estimate (s.e.) on deworming Treatment pupils within 6 km (in '000s), demeaned	Obs.
Panel A: Labor Supply				
Hours worked (for wages, self-employed, agriculture) in last week, full sample	15.2 (21.9)	1.76* (0.97)	1.54 (1.16)	5,084
Hours worked (for wages, self-employed, agriculture) in last week	18.5 (23.8)	3.10** (1.21)	1.71 (1.44)	3,873
Indicator for hours worked > 35 (for wages, self-employed, agriculture) in last week	0.215 (0.411)	0.051** (0.023)	0.037 (0.027)	3,873
Indicator for hours worked > 0 (for wages, self-employed, agriculture) in last week	0.704 (0.457)	0.023 (0.024)	-0.027 (0.030)	3,873
<i>Among those with positive hours worked:</i>				
Hours worked (for wages, self-employed, agriculture) in last week	26.3 (24.5)	3.23** (1.44)	3.51** (1.58)	2,853
Hours worked (in agriculture) in last week	9.8 (9.1)	1.10* (0.66)	-0.77 (0.62)	2,187
Hours worked (for wages, self-employed) in last week	44.6 (23.0)	5.03** (2.19)	7.40*** (2.39)	1,120
Hours worked (as self-employed) in last week	38.2 (24.0)	6.7** (3.0)	7.7*** (2.9)	528
Hours worked (for wages) in the last week	47.3 (21.3)	4.53* (2.67)	5.06** (3.11)	605
Panel B: Health related absenteeism (negative binomial results)				
Work days missed due to poor health, past month	1.53 (3.19)	-0.062 (0.165)	0.002 (0.211)	2,853
Work days missed due to poor health (in agriculture), past month	1.51 (2.92)	0.182 (0.165)	0.093 (0.211)	1,360
Work days missed due to poor health (if work for wages, self-employed), past month	1.43 (3.23)	-0.336 (0.222)	-0.338 (0.238)	1,097
Work days missed due to poor health (if self-employed), past month	1.63 (4.08)	-0.221 (0.302)	-0.188 (0.351)	504
Work days missed due to poor health (if work for wages), past month	1.34 (2.62)	-0.526** (0.250)	-0.197 (0.297)	608

Notes: Each row in Panel A is from a separate OLS regression, and each row in Panel B is a negative binomial specification. All observations are weighted to maintain initial population proportions. The sample is restricted to respondents who were not enrolled in school in the year of the survey, except for the first row of Panel A (which is run on the full sample of surveyed individuals). In the “work days missed due to poor health” regressions, the sample is further restricted to respondents who worked at least 10 hours in the last week. Standard errors are clustered by school. Significant at 90% (*), 95% (**), 99% (***) confidence. All

regressions include controls for baseline 1998 primary school population, geographic zone of the school, survey wave and month of interview, a female indicator variable, baseline 1998 school grade fixed effects, the average school test score on the 1996 Busia District mock exams, total primary school pupils within 6 km, and the cost-sharing school indicator.

Table 4: Deworming impacts on Hours Worked among subgroups
(out of school sample)

	Hours Worked (for wages, self-employed, agriculture) last week			
	(1)	(2)	(3)	(4)
Deworming Treatment indicator	4.55** (1.87)	2.48* (1.49)	3.16*** (1.10)	3.23*** (1.06)
Female	-7.10*** (1.99)	-9.04*** (1.06)	-9.05*** (1.06)	-9.11*** (1.06)
Female * Treatment	-2.83 (2.28)	--	--	--
Grades 5-7 in 1998	--	4.00* (2.06)	--	--
Grades 5-7 * Treatment	--	1.14 (2.38)	--	--
Moderate-heavy worm infection rate at the zonal level (1998) demeaned	--	--	-1.40 (1.02)	--
Moderate-heavy worm infection rate*Treatment	--	--	2.09** (0.86)	--
Moderate-heavy geohelminth infection rate at the zonal level (1998), demeaned	--	--	--	1.41 (1.01)
Moderate-heavy geohelminth infection rate * Treatment	--	--	--	0.318 (0.91)
Moderate-heavy schistosomiasis infection rate at the zonal level (1998), demeaned	--	--	--	-2.53** (1.12)
Moderate-heavy schistosomiasis infection rate * Treatment	--	--	--	2.44** (1.10)
Additional controls	Yes	Yes	Yes	Yes
R ²	0.064	0.062	0.065	0.069
Observations	3,873	3,873	3,873	3873
Mean (s.d.) in the control group	18.5 (23.8)	18.5 (23.8)	18.5 (23.8)	18.5 (23.8)

Notes: The sample used in Table 4 include all individuals surveyed in the KLPS2 with data for the relevant dependent variable who were not enrolled in school at the time of survey. All observations are weighted to maintain initial population proportions. Additional controls include a gender indicator, baseline grade fixed effects, geographic zone fixed effects, the mean pre-program school test score, baseline school population, cost-sharing school in 2001 indicator, survey wave indicator, and month of interview fixed effects, as well as both the total number of deworming treatment school pupils and the total number of primary school pupils within 6 km (in '000s), demeaned (coefficient estimates not shown). Standard errors are clustered by school. Significant at 90% (*), 95% (**), 99% (***) confidence.

Table 5: Deworming impacts on employment sector and occupation (out-of-school sample)

	Control group proportion	Coefficient estimate (s.e.) on deworming treatment indicator	Coefficient estimate (s.e.) on deworming treatment pupils within 6 km (in '000s), demeaned	Mean (s.d.) hours per week worked in sector, control group	Mean (s.d.) days of work lost to poor health in last month, control group	Mean (s.d.) earnings in sector, past month (Kenya Shillings), control
Panel A: Employment Sector^a						
Agriculture	0.536	-0.013 (0.031)	-0.006 (0.038)	10 (9)	1.6 (2.9)	--
Agriculture–cash crop (cotton, tobacco, sugar)	0.013	0.017* (0.009)	-0.002 (0.008)	7 (9)	1.4 (3.6)	--
Self-Employment (non-agriculture)	0.133	0.023 (0.016)	0.006 (0.016)	34 (26)	1.8 (4.4)	--
Wage Employment	0.210	-0.006 (0.022)	-0.002 (0.025)	43 (25)	1.4 (2.9)	3,572 (3,586)
Panel B: Occupation Conditional on Wage Employment						
Agriculture	0.022	-0.017 (0.014)	-0.019 (0.023)	13 (12)	2.1 (1.9)	618 (258)
Fishing	0.200	-0.027 (0.063)	-0.014 (0.086)	37 (25)	2.1 (4.2)	3,130 (1,722)
Retail	0.146	-0.015 (0.039)	0.025 (0.043)	43 (27)	1.1 (2.1)	2,231 (1,716)
Trade contractors	0.096	-0.009 (0.030)	0.056 (0.045)	26 (22)	0.9 (2.5)	3,191 (2,183)
Manufacturing	0.031	0.067*** (0.025)	0.043 (0.032)	53 (24)	1.1 (1.8)	5,311 (3,373)
Manufacturing – males only	0.032	0.082** (0.033)	0.034 (0.034)	49 (20)	1.0 (1.9)	6,277 (3,469)
Casual/Construction laborer	0.031	-0.041** (0.019)	-0.022 (0.018)	51 (31)	0.4 (1.0)	2,246 (1,576)
Wholesale trade	0.028	0.014 (0.029)	0.017 (0.034)	44 (14)	0.7 (1.9)	4,727 (3,953)
Services (all)	0.414	0.040 (0.057)	0.040 (0.077)	50 (22)	1.4 (2.7)	4,345 (4,837)
Domestic	0.122	-0.015 (0.033)	-0.028 (0.039)	61 (17)	1.5 (2.5)	3,047 (1,754)
Domestic – females only	0.346	-0.190* (0.033)	-0.445*** (0.039)	65 (17)	1.6 (2.5)	2,795 (1,754)

		(0.113)	(0.154)	(17)	(2.6)	(888)
Restaurants, cafes, etc.	0.064	-0.032	0.023	53	1.2	4,194
		(0.025)	(0.034)	(21)	(2.5)	(3,567)

Notes: The sample used in Panel A includes all individuals surveyed in the KLPS2 who were not enrolled in school in the year of the survey. The sample used in Panel B additionally restricts the sample to those respondents who report working for pay (with earnings greater than zero) at the time of the survey. Each row is from a separate OLS regression analogous to equation 4. All observations are weighted to maintain initial population proportions. Standard errors are clustered by school. Significant at 90% (*), 95% (**), 99% (***) confidence. All regressions include controls for baseline 1998 primary school population, geographic zone of the school, survey wave and month of interview, a female indicator variable, baseline 1998 school grade fixed effects, the average school test score on the 1996 Busia District mock exams, total primary school pupils within 6 km, and the cost-sharing school indicator.

^a Note that we only have days of work missed in total, not separated by sector, so among those who work in multiple sectors, there is some overlap.

Table 6: Deworming impacts on migration

Dependent variable	Control group proportion	Coefficient estimate (s.e.) on deworming treatment indicator	Coefficient estimate (s.e.) on deworming treatment pupils within 6 km (in '000s), demeaned	Mean (s.d.) hours per week worked, control group	Mean (s.d.) days of work lost to poor health in last month, control group	Mean (s.d.) earnings, past month (Kenya Shillings), control
Panel A: Full sample						
Residence in Busia district	0.740 (0.439)	0.14 (0.022)	-0.019 (0.025)	4.5 (15)	1.5 (3.1)	328 (1,264)
Residence in a city	0.179 (0.383)	-0.001 (0.019)	0.016 (0.024)	14 (26)	1.3 (3.0)	1,199 (2,461)
Residence > 500 km from 1998 primary school	0.031 (0.174)	0.017* (0.010)	0.018 (0.013)	15 (27)	1.9 (4.6)	1,201 (2,482)
Residence outside of Kenya	0.042 (0.202)	0.011 (0.011)	-0.003 (0.016)	12 (23)	1.6 (2.6)	770 (1,617)
Migrated to city for a job or to look for work	0.319 (0.467)	0.053 (0.056)	0.045 (0.072)	33 (31)	1.1 (2.0)	2,715 (3,092)
Panel B: Out-of-school sample						
Residence in Busia district	0.668 (0.471)	0.012 (0.026)	0.000 (0.030)	6.2 (17)	1.6 (3.3)	428 (1,294)
Residence in a city	0.201 (0.401)	0.010 (0.023)	0.019 (0.026)	16 (28)	1.4 (3.2)	1,384 (2,584)
Residence > 500 km from 1998 primary school	0.036 (0.187)	0.018* (0.011)	0.018 (0.015)	17 (28)	2.0 (4.7)	1,373 (2,610)
Residence outside of Kenya	0.048 (0.214)	0.003 (0.013)	-0.014 (0.019)	13 (24)	1.8 (2.8)	828 (1,583)
Migrated to city for a job or to look for work	0.377 (0.486)	0.052 (0.059)	0.045 (0.076)	33 (32)	1.1 (2.0)	2,672 (3,069)

Notes: The sample used in Panel A includes all individuals surveyed in the KLPS2 with residential location information. Panel C restricts only to those not enrolled in school in the year of survey. Each row is from a separate OLS regression. Outcomes are indicators for location of residence at the time of survey. All observations are weighted to maintain initial population proportions. Standard errors are clustered by school. Significant at 90% (*), 95% (**), 99% (***) confidence. All regressions include controls for baseline 1998 primary school population, geographic zone of the school, survey wave and month of interview, a female indicator variable, baseline 1998 school grade fixed effects, the average school test score on the 1996 Busia District mock exams, total primary school pupils within 6 km, and the cost-sharing school indicator.

Table 7: Deworming impacts on labor earnings (2007-2009; out-of-school wage employment sample)

	Dependent variable:			
	Ln(Total labor earnings, past month)			
	(1)	(2)	(3)	(4)
Deworming Treatment indicator	0.230** (0.073)	0.224** (0.073)	0.301*** (0.091)	0.332*** (0.102)
Deworming Treatment pupils within 6 km (in '000s), demeaned			0.228 (0.163)	0.223 (0.166)
Total pupils within 6 km (in '000s), demeaned			-0.119 (0.124)	-0.115 (0.125)
Group 2 school indicator				-0.080 (0.095)
Cost sharing school (in 2001) indicator	-0.134 (0.083)	-0.170* (0.093)	-0.194** (0.084)	-0.188** (0.085)
Additional controls	No	Yes	Yes	Yes
R ²	0.071	0.178	0.186	0.187
Observations	687	687	687	687
Mean (s.d.) in the control group	7.84 (0.85)	7.84 (0.85)	7.84 (0.85)	7.84 (0.85)

Notes: The sample used here includes all individuals surveyed in the KLPS2 who report positive labor earnings at the time of survey and were not enrolled in school in the year of the survey. Labor earnings include cash and in-kind, and are deflated to reflect price differences between rural and urban areas. All observations are weighted to maintain initial population proportions. All regressions include controls for baseline 1998 primary school population, geographic zone of the school, and survey wave and month of interview. Additional controls include a female indicator variable, baseline 1998 school grade fixed effects, and the average school test score on the 1996 Busia District mock exams. Standard errors are clustered by school. Significant at 90% (*), 95% (**), 99% (***) confidence.

Table 8: Deworming impacts on wage- and non-agricultural self-employment earnings and wages

Dependent variable	Control group variable mean (s.d.)	Coefficient estimate (s.e.) on deworming Treatment indicator	Coefficient estimate (s.e.) on deworming Treatment pupils within 6 km (in '000s), demeaned	Obs.
Panel A: Wage earner, out-of-school subsample				
Ln(Total labor earnings, past month)	7.84 (0.84)	0.301*** (0.091)	0.228 (0.163)	687
Ln(Wage = Total labor earnings / hours, past month)	2.76 (0.94)	0.203* (0.111)	0.027 (0.155)	605
Panel B: Wage earner since 2007 subsample				
Ln(Total labor earnings, most recent month worked)	7.88 (0.91)	0.211*** (0.072)	0.170 (0.116)	1,175
Indicator for worked for wages (or in-kind) since 2007	0.244 (0.430)	0.000 (0.021)	0.040 (0.024)	5,081
Panel C: Self-employed (non-agriculture), out-of-school subsample				
Mean effect size (total employees hired, three profits measures)	0.000 (1.000)	0.200** (0.093)	0.060 (0.101)	536
Total employees hired (excluding self), among the self-employed	0.189 (0.625)	0.641* (0.374)	0.623 (0.530)	616
Total self-employed profits (self-reported) past month	1,771 (2,621)	409 (313)	-53 (361)	570
Total self-employed profits (constructed) past month	1,539 (6,534)	553 (940)	-156 (957)	580
Total self-employed profits (self-reported) past year	12,230 (17,356)	2,515 (2,332)	-511 (2,605)	552
Panel D: Out-of-school sample				
Total earnings (wages, self-employed profits), past month (=0 for non-earners)	974 (2,392)	245* (136)	46 (186)	3,847
Total wages (labor, non-agricultural self-employment earnings/hr), past month	21.8 (31.3)	5.7 (4.2)	-4.5 (6.7)	1,109
Panel E: Out-of-school sample in agriculture				
Total value (KSh) of crop sales past year (if farm household)	578 (2534)	126 (198)	-168 (264)	2,732
Uses “improved” agricultural practice (fertilizer, seed, irrigation)	0.295 (0.456)	0.047* (0.027)	0.035 (0.028)	2,738

Notes: The sample used in Panel C includes all individuals who were surveyed in KLPS2 who were not enrolled in school in the year of the survey, and the three profit measures in this panel additionally restrict on having positive profits. This is not too restrictive, as no one reports negative profits, and only 5% of the sample report zero profits. Panel A additionally restricts to those who report positive earnings at the time of survey. Panel B does not restrict on school

enrollment during the year of survey, and instead restricts on reporting positive earnings between 2007 and the year of the survey. “Agricultural work” in Panel E includes both farming and pastoral activities. Each row is from a separate OLS regression. Ln(Wage) adjusts for the different reporting periods for earnings (month) and hours (week), and is missing for those with zero earnings. All observations are weighted to maintain initial population proportions. Standard errors are clustered by school. Significant at 90% (*), 95% (**), 99% (***) confidence. All regressions include controls for baseline 1998 primary school population, geographic zone of the school, survey wave and month of interview, a female indicator variable, baseline 1998 school grade fixed effects, the average school test score on the 1996 Busia District mock exams, total primary school pupils within 6 km, and the cost-sharing school indicator.

Table 9: Deworming impacts on meals eaten

Dependent variable:	Control group variable mean (s.d.)	Coefficient estimate (s.e.) on deworming Treatment indicator	Coefficient estimate (s.e.) on deworming Treatment pupils within 6 km (in '000s), demeaned	Obs.
Number of meals eaten yesterday, full sample	2.16 (0.64)	0.096 ^{***} (0.028)	0.080 ^{***} (0.023)	5,083
Number of meals eaten yesterday, among those not in school	2.16 (0.64)	0.103 ^{***} (0.029)	0.101 ^{***} (0.032)	3,872
Number of meals eaten yesterday, among those in agriculture	2.13 (0.63)	0.076 [*] (0.035)	0.120 ^{***} (0.035)	2,186
Number of meals eaten yesterday, among wage earners and self-employed	2.15 (0.65)	0.205 ^{***} (0.059)	0.180 ^{***} (0.067)	1,263
Number of meals eaten yesterday, among wage earners	2.15 (0.65)	0.224 ^{***} (0.072)	0.173 [*] (0.101)	695
Number of meals eaten yesterday, among self-employed	2.13 (0.69)	0.149 [*] (0.084)	0.193 [*] (0.079)	584

Notes: The sample used here is all individuals who were surveyed in KLPS2. Rows 3-6 further restrict to those who were not enrolled in school in the year of survey. Each row is from a separate OLS regression analogous to equation 6. All observations are weighted to maintain initial population proportions. Standard errors are clustered by school. Significant at 90% (*), 95% (**), 99% (***) confidence. All regressions include controls for baseline 1998 primary school population, geographic zone of the school, survey wave and month of interview, a female indicator variable, baseline 1998 school grade fixed effects, the average school test score on the 1996 Busia District mock exams, total primary school pupils within 6 km, and the cost-sharing school indicator.

Table 10: The constrained specification: coefficient estimate on moderate-heavy worm infections (two-sample instrumental variable TSIV estimates) and over-identification tests

Dependent variable	Control group variable mean (s.d.)	TSIV coefficient estimate (s.e.) on predicted years of moderate-heavy worm infection	Obs.	Over-identification test (Hansen J-statistic), p-value
Hours worked (for wages, self-employed, agriculture) in last week	18.5 (23.8)	-4.91** (1.85)	3,873	0.581
Ln(Total labor earnings, past month)	7.84 (0.85)	-0.478** (0.125)	687	0.394
Number of meals eaten yesterday	2.16 (0.64)	-0.128** (0.044)	3,872	0.252

Notes: Two-sample instrumental variable estimates. Standard errors are bootstrapped clustering by school. Significant at 90% (*), 95% (**), 99% (***) confidence. All second-stage regressions are run on the sample of individuals who were not enrolled in school in the year of survey, and include controls for baseline 1998 primary school population, geographic zone of the school, survey wave and month of interview, a female indicator variable, baseline 1998 school grade fixed effects, the average school test score on the 1996 Busia District mock exams, and total primary school pupils within 6 km. The instrumental variables in the first-stage are the deworming treatment indicator, the number of deworming Treatment pupils within 6 km (in '000s) demeaned, the cost-sharing indicator variable, and the number of cost-sharing school pupils with 6 km (in '000s) demeaned. The Hansen J-statistic is computed using a GMM approach for the subset of respondents with 2001 parasitological data.

Table 11: Welfare and Rate of Return Analysis

	Deworming price paid by individuals (per year)	Deworming take-up rate (Kremer and Miguel 2007)	Cost (USD) per targeted student (cost x take-up x 2.41 years)	Net externality benefit per targeted student, in money-metric utility (USD)	DWL below which subsidy less desirable than: no subsidy [partial subsidy]
Panel A: Health investment model calibration results					
Deworming subsidy level					
No subsidy	\$1.33	5%	0	\$64.90	--
Partial subsidy	\$0.30	19%	\$0.13	\$310.94	> 170,000% [--]
Full subsidy	\$0.00	75%	\$1.07	\$1227.39	> 100,000% [>140,000%]
	Total benefits (per pupil), USD	Cost of deworming and DWL (per pupil), USD	Internal rate of return (per annum)		
Panel B: Deworming as a human capital investment					
Total lifetime earnings (over 40 years), full sample					
	\$2,961	\$0.53	81.7%		

Notes: The take-up levels and deworming subsidies and prices are taken from Kremer and Miguel (2007). The term in brackets in the third row of the rightmost column is the DWL needed for a partial subsidy to be preferred to a full subsidy.

Figure 1: Project Timeline of the Primary School Deworming Program (PSDP) and the Kenya Life Panel Survey (KLPS)

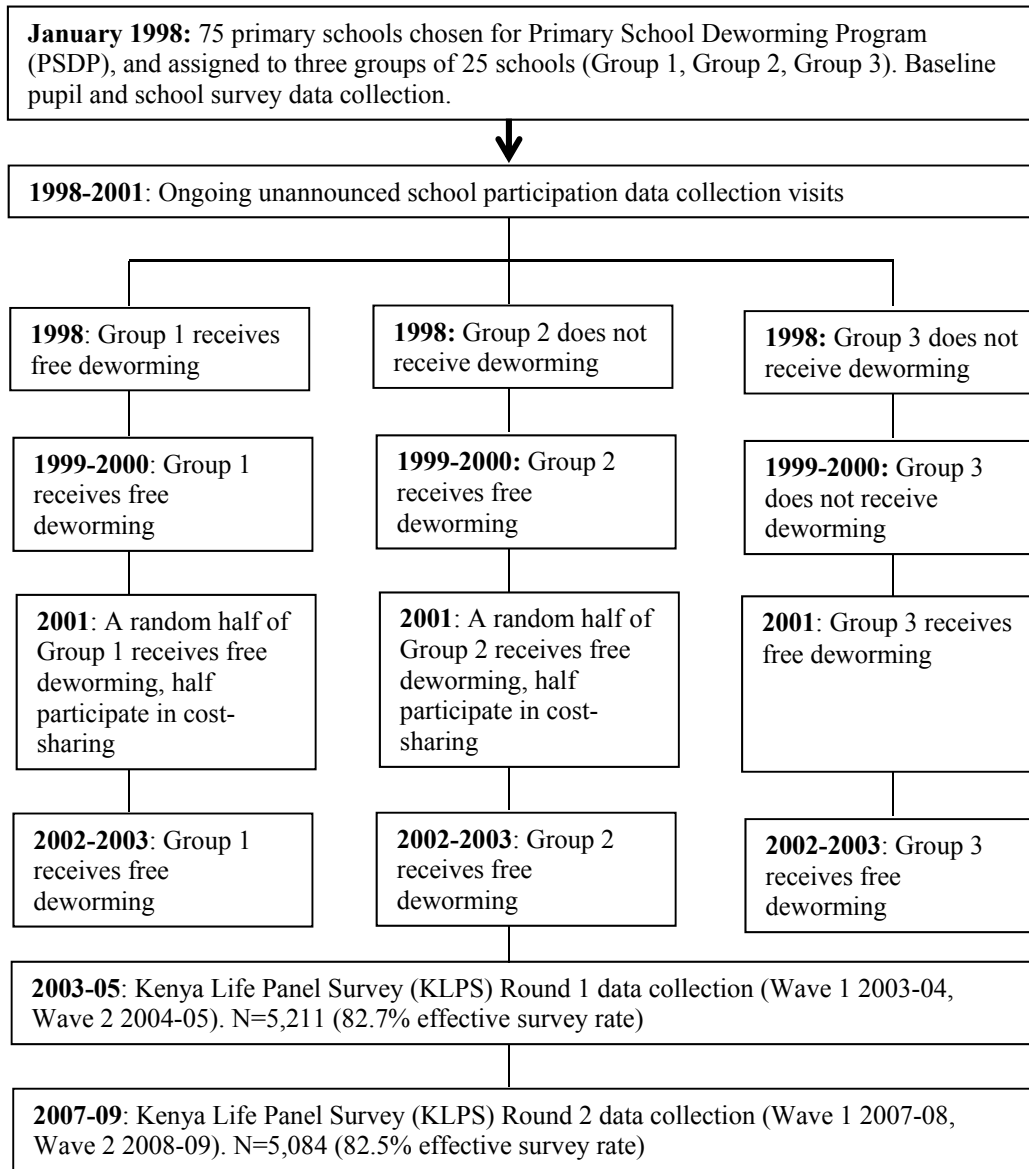


Figure 2: The distribution of hours worked in the last week, deworming treatment versus control (if out of school and working 10 to 80 hours)

Panel A (top-left): Full sample; Panel B (top-right): Agricultural work subsample;

Panel C (bottom-left): Self-employed subsample; Panel D (bottom-right): Wage earner subsample.

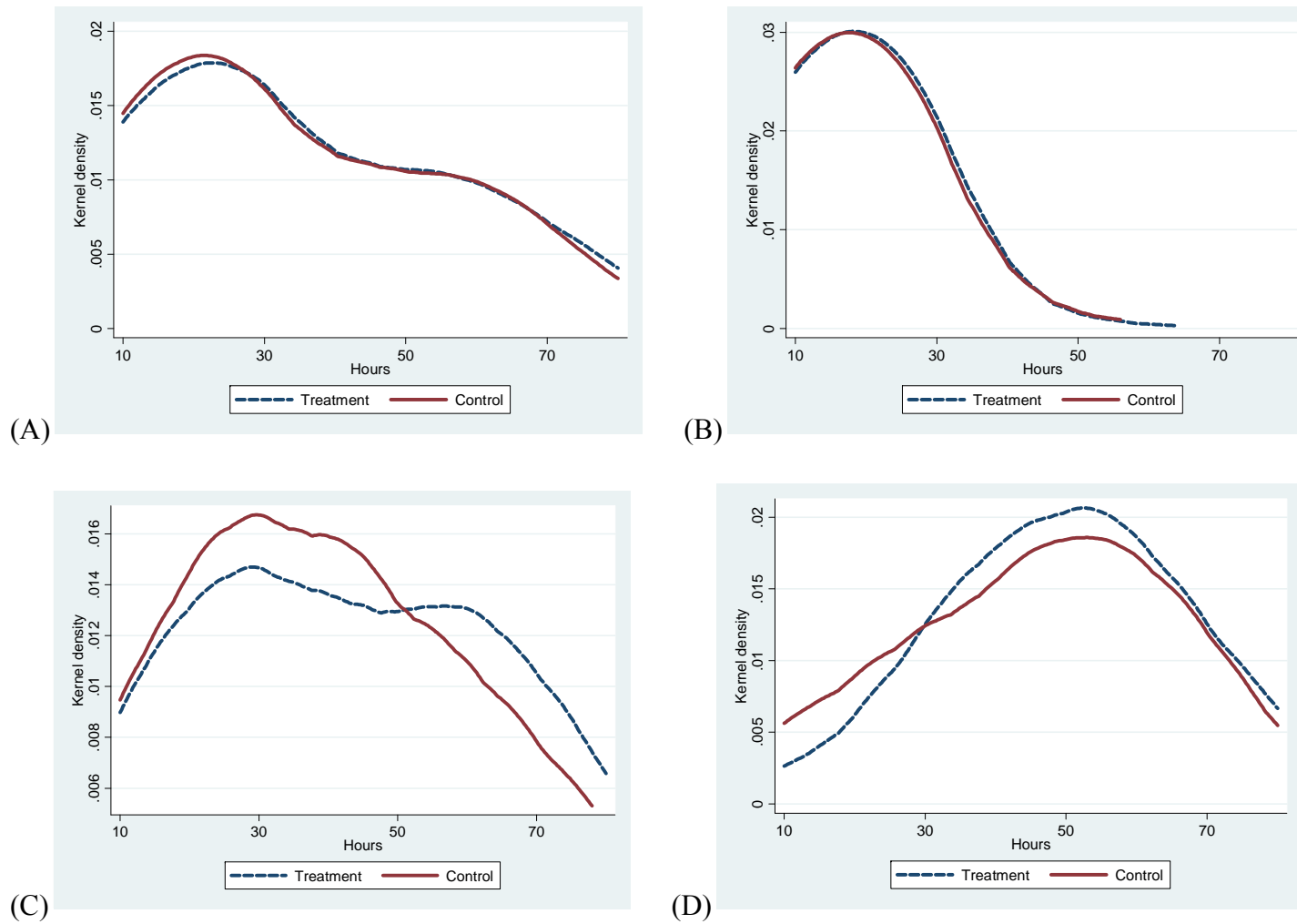
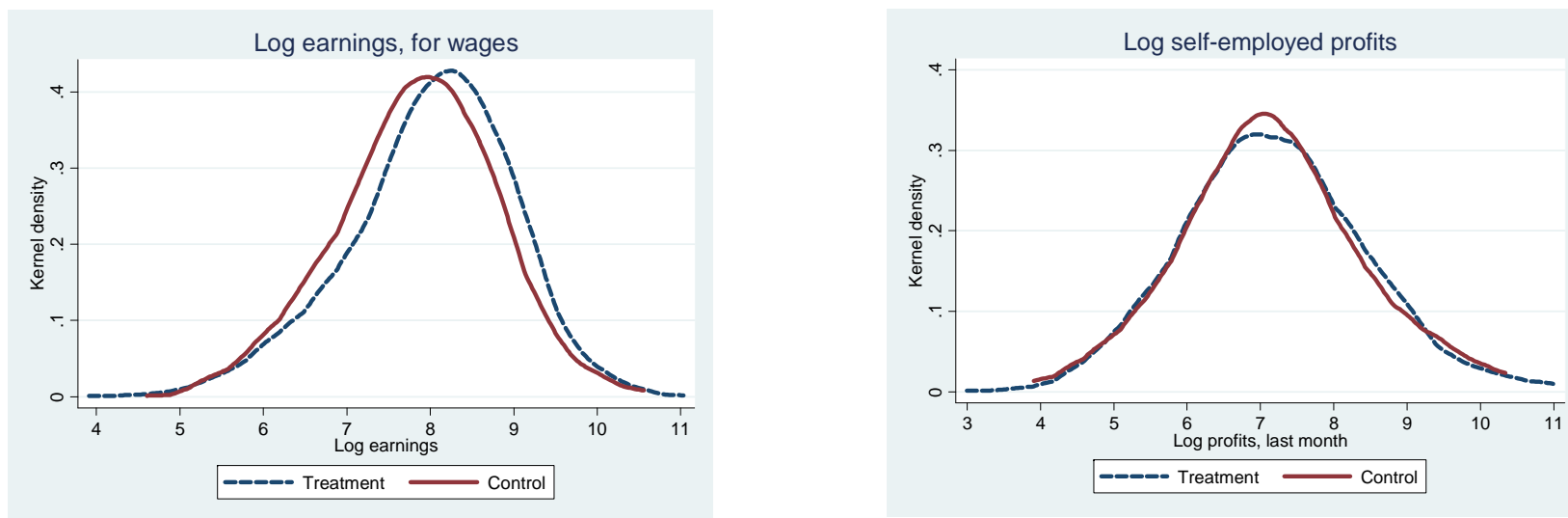


Figure 3: The distribution of log labor earnings and non-agricultural self-employment profits in the last month, deworming treatment versus control (among those with positive labor earnings or profits)



Notes: The sample used here includes all individuals who were surveyed in KLPS-2, were not enrolled in school at the time of survey and reported working for wages or in-kind or for positive profits in the last month. All observations are weighted to maintain initial population proportions.

Supplementary Appendix A: Research Design Appendix (not intended for publication)

A.1 Selection of Primary Schools for the PSDP Sample:

There were a total of 92 primary schools in the study area of Budalangi and Funyula divisions, across eight geographic zones, in January 1998. Seventy-five of these 92 schools were selected to participate in PSDP. The 17 excluded schools include: town schools that were quite different from other local schools in terms of student socioeconomic background; single-sex schools; a few schools located on islands in Lake Victoria (posing severe transportation difficulties); and those few schools that had in the past already received deworming and other health treatments under an earlier small-scale ICS (NGO) program.

In particular, four primary schools in Funyula Town were excluded due to large perceived income differences between their student populations and those in other local schools. In particular, Moody Awori Primary School, Namboboto Boys Primary School, and Namboboto Girls School charged schools fees well in excess of neighboring primary schools, and thus attracted the local “elite”. Nangina Girls Primary School is a private boarding school, and charged even higher fees, and was similarly excluded.

Four other primary schools in Budalangi division were excluded from the sample due to geographic isolation, which introduced logistic difficulties and would have complicated deworming treatment and data collection. Three of these schools – Maduwa, Buluwani and Bubamba Primary Schools – are located on islands in Lake Victoria. The fourth, Osieko Primary School, is separated from the rest of Budalangi by a marshy area.

Two additional schools were excluded. Rugunga Primary School in Budalangi division served as the pilot school for the PSDP in late 1997, receiving deworming treatment before other local schools, and thus it was excluded from the evaluation. Finally, Mukonjo Primary School was excluded since it was a newly opened school in 1998 with few pupils in the upper standards (grades), and thus was not comparable to the other sample schools.

Seven schools had participated in the ICS Child Sponsorship Program/School Health Program (CSP/SHP). In 1998, it was felt that identification of treatment effects in these schools could be complicated by the past and ongoing activities in those schools, including health treatment (and deworming in particular), and hence they were excluded from the sample. The NGO’s earlier criteria in selecting these particular seven schools (in 1994-1995) is not clear.

A.2 Prospective Experimental Procedure:

Miguel and Kremer (2004) contains a partial description of the prospective experimental “list randomization” procedure, and we expand on it here. Schools were first stratified by geographical area (division, then zone)³⁰, and the zones were listed alphabetically (within each division), and then within each zone they were listed in increasing order of student enrolment in the school. Table 1 shows there is no significant difference between average school populations in the treatment and control groups.

While the original plan had been to stratify by participation in other NGO programs, the actual randomization was not carried out this way. Schools participating in the intensive CSP/SHP program were dropped from the sample (as detailed above), while 27 primary schools with less intensive NGO programs were retained in the sample. These 27 schools were receiving assistance in the form of either free classroom textbooks, grants for school committees, or teacher training and bonuses. It is worth emphasizing that the randomized evaluations of these various interventions did

³⁰ There are two divisions (Budalangi and Funyula) containing a total of eight zones (Agenga/Nanguba, Bunyala Central, Bunyala North, Bunyala South, Bwiri, Funyula, Namboboto, Nambuku).

not find statistically significant average project impacts on a wide range of educational outcomes.³¹ The schools that benefited from these previous programs were found in all eight geographic zones; the distribution of the 27 schools across the eight zones is: Agenga/Nanguba (5 schools), Bunyala Central (1), Bunyala North (4), Bunyala South (2), Bwiri (4), Funyula (5), Namboboto (1), Nambuku (5). The results in the current paper are robust to including controls for inclusion in these other NGO programs (results not shown).

The schools were “stacked” as follows. Schools were divided by geographic division, then zone (alphabetically), and then listed according to school enrolment (as of February 1997, for grades 3 through 8) in ascending order. If there were, say, four schools in a zone, they would be listed according to school enrolment in ascending order, then they would be assigned consecutively to Group 1; Group 2; Group 3; Group 1. Then moving onto the next zone, the first school in that stratum was assigned to Group 2, the next school to Group 3, and so on. Thus the group assignment “starting value” within each stratum was largely arbitrary, except for the alphabetically first zone (in the first division), which assigned the school with the lowest enrolment in its geographic zone to Group 1. Finally, there were three primary schools (Runyu, Nangina Mixed, and Kabwodo) nearly excluded from the original stacking of 72 schools that were added back into the sample for the original randomization, to bring the sample up to 75. These schools were originally excluded for similar reasons as listed above – e.g., Runyu is rather geographically isolated, and Nangina Mixed is a relatively high quality school located near Funyula Town. However, in the interests of boosting sample size, these three schools were included in the list randomization alphabetically as the “bottom” three schools in the list.

Deaton (2010) raises concerns about the list randomization approach, in the case where the first school listed in the first randomization “triplet” is different than other schools (in our case, it has lower than average school enrolment); the same concerns would apply to several other well-known recent field experiments in development economics, most notably Chattopadhyay and Duflo’s 2004 paper “Women as policymakers: Evidence from a randomized policy experiment in India” in *Econometrica*. However, this is not a major threat to our empirical approach. Following Bruhn and McKenzie (2009) we include all variables used in the randomization procedure (such as baseline school enrolment) as explanatory variables in our regression specifications, thus controlling for any direct effect of school size, and partially controlling for unmeasured characteristics correlated with school size. Table 7 shows that the estimate on the deworming treatment indicator is unchanged whether or not additional explanatory variables are included, suggesting that any bias is likely to be very small. The difference in average school enrollment between the treatment and control groups is small and not statistically significant (Table 1). Moreover, even if the first school in the first randomization triplet were an outlier along some unobserved dimension (which seems unlikely), given our sample size of 75 schools and 25 randomization triplets, and the fact that school size is not systematically related to treatment group assignment for the other 24 randomization triplets (as discussed above), approximately 96% of any hypothesized bias would be eliminated. Taken together, the prospective experimental design we exploit in the current paper is likely to yield reliable causal inference.

³¹ See Glewwe, Paul, Michael Kremer, and Sylvie Moulin. (2009). “Many Children Left Behind? Textbooks and Test Scores in Kenya”, *American Economic Journal: Applied Economics*, 1(1): 112-135.

Supplementary Appendix Table A1: Baseline (1998) summary statistics and PSDP randomization checks(out-of-school sample)

	All mean (s.d.)	Treatment mean (s.d.)	Control mean (s.d.)	Treatment – Control (s.e.)	Kolmogorov- Smirnov p-value
Age (1998)	12.7 (2.4)	12.6 (2.4)	12.7 (2.4)	-0.114 (0.118)	0.319
Grade (1998)	4.56 (1.64)	4.54 (1.66)	4.61 (1.59)	-0.072 (0.063)	0.207
Female	0.500 (0.500)	0.496 (0.500)	0.508 (0.500)	-0.012 (0.022)	--
School average test score (1996)	0.013 (0.417)	0.009 (0.425)	0.020 (0.400)	-0.011 (0.105)	0.266
Primary school located in Budalangi division	0.386 (0.487)	0.375 (0.484)	0.408 (0.492)	-0.033 (0.139)	--
Population of primary school	477 (218)	498 (241)	433 (148)	65 (55)	0.370
Total treatment (Group 1, 2) primary school students within 6 km	3156 (923)	3071 (845)	3335 (1064)	-264 (271)	0.193
Total primary school students within 6 km	4663 (1352)	4661 (1235)	4667 (1571)	-6.83 (400)	0.243

Notes: The data are from the PSDP, and includes all individuals surveyed in the KLPS2 who had worked for wages in the past month at the time of the interview. All observations are weighted to maintain initial population proportions. Sample size is 3,873, except for age which is missing some information. All variables are 1998 values unless otherwise noted. The average school test score is from the 1996 Busia District mock exam, and has been converted to units of normalized individual standard deviations. The “Treatment – Control” differences are derived from a linear regression of the outcome on a constant and the treatment indicator, but results are similar if we include further controls (for survey wave, 1998 administrative zone of residence, cost sharing school indicator, and baseline 1998 population of the individual’s primary school). Standard errors are clustered by school. Significant at 90% (*), 95% (**), 99% (***) confidence. The Kolmogorov-Smirnov p-values are only presented for the non-binary variables, where it is informative.

Supplementary Appendix Table A2: Baseline (1998) summary statistics and PSDP randomization checks, (out-of-school, wage earner sample)

	All mean (s.d.)	Treatment mean (s.d.)	Control mean (s.d.)	Treatment – Control (s.e.)	Kolmogorov- Smirnov p-value
Age (1998)	13.3 (2.4)	13.1 (2.4)	13.5 (2.5)	-0.358 (0.281)	0.285
Grade (1998)	4.86 (1.61)	4.84 (1.63)	4.90 (1.57)	-0.057 (0.142)	0.477
Female	0.235 (0.424)	0.208 (0.406)	0.289 (0.454)	-0.081* (0.046)	--
School average test score (1996)	-0.014 (0.411)	-0.030 (0.415)	0.020 (0.400)	-0.049 (0.109)	0.301
Primary school located in Budalangi division	0.412 (0.494)	0.434 (0.496)	0.397 (0.490)	0.037 (0.146)	--
Population of primary school	480 (220)	506 (247)	427 (137)	78 (57)	0.348
Total treatment (Group 1, 2) primary school students within 6 km	3196 (906)	3111 (801)	3369 (1069)	-258 (290)	0.168
Total primary school students within 6 km	4718 (1331)	4728 (1176)	4699 (1602)	29 (430)	0.204

Notes: The data are from the PSDP, and includes all individuals surveyed in the KLPS2 who had worked for wages in the past month at the time of the interview and were not enrolled in school during the year of interview. Sample size is 695, except for age which is missing some information (694 observations). All observations are weighted to maintain initial population proportions. All variables are 1998 values unless otherwise noted. The average school test score is from the 1996 Busia District mock exam, and has been converted to units of normalized individual standard deviations. The “Treatment – Control” differences are derived from a linear regression of the outcome on a constant and the treatment indicator, but results are similar if we include further controls (for survey wave, 1998 administrative zone of residence, cost sharing school indicator, and baseline 1998 population of the individual’s primary school). Standard errors are clustered by school. Significant at 90% (*), 95% (**), 99% (***) confidence. The Kolmogorov-Smirnov p-values are only presented for the non-binary variables, where it is informative.

Supplementary Appendix Table A3: Impacts on school enrollment and participation

Panel A: Dep. var.: School enrollment indicator	1998	1999	2000	2001	2002	2003	2004	2005	2006	2007	Total
Deworming Treatment indicator	N/A	0.021*	0.036**	0.047**	0.046**	0.046*	0.028	0.035	0.017	0.003	0.279*
		(0.011)	(0.016)	(0.019)	(0.021)	(0.022)	(0.026)	(0.027)	(0.027)	(0.027)	(0.147)
Deworming Treatment pupils within 6 km (in '000s), demeaned	N/A	0.011	0.014	0.024	0.026	0.015	0.008	0.016	0.034	-0.011	0.138
		(0.013)	(0.015)	(0.017)	(0.018)	(0.025)	(0.027)	(0.027)	(0.029)	(0.031)	(0.149)
Mean in the control group		0.924	0.834	0.757	0.696	0.653	0.584	0.474	0.426	0.342	6.690
Observations		5,037	5,037	5,037	5,037	5,037	5,037	5,037	5,037	5,037	5,037
Panel B: Dep. var.: Primary school participation											
Deworming Treatment indicator	0.074***	0.068***	0.013	0.057**	N/A	N/A	N/A	N/A	N/A	N/A	0.129**
	(0.023)	(0.023)	(0.020)	(0.024)							(0.064)
Deworming Treatment pupils within 6 km (in '000s), demeaned	0.019	-0.008	-0.019	0.009							0.044
	(0.024)	(0.018)	(0.020)	(0.017)							(0.049)
Mean in the control group	0.839	0.709	0.686	0.586							2.513
Observations	4,900	4,821	4,342	3,831							5,037

Notes: The sample used in Panel A includes all individuals who were surveyed in KLPS2. The sample used in Panel B includes a subset of these respondents who additionally have school participation data from at least one of the years between 1998 and 2001. All regressions include controls for baseline 1998 primary school population, geographic zone of the school, cost-sharing school in 2001 indicator, a gender indicator and pupil grade. The treatment indicator in 1998 is the Group 1 indicator. There is no estimated result for 1998 in Panel A since all respondents were enrolled in school in 1998 (as this was a study inclusion criterion). All observations are weighted to maintain initial population proportions. Standard errors are clustered by school. Significant at 90% (*), 95% (**), 99% (***) confidence.

Supplementary Appendix Table A4: Proportion of Individuals Working in Multiple Sectors

	In School	Work in Agriculture	Work for Wages	Work in Self Employment	None
In School	0.251	0.122	0.005	0.002	0.125
Work in Agriculture		0.519	0.040	0.058	0.302
Work for Wages			0.158	0.003	0.113
Work in self-employment				0.107	0.046
None					0.192

Notes: This table explores the proportion of individuals working in multiple sectors. The diagonal provides percentage of the overall respondents working in that specific sector, while the off-diagonal gives the percentage of the overall respondents working in the two relevant sectors. None refers to a respondent who is not in school and does not work in agriculture, for wages, or for self-employment.

Supplementary Appendix Table A5: Baseline (1998) summary statistics and attrition checks

	Full KLPS Sample	Found: Regular Tracking	Found: Intensive Tracking	Not Found	Found (Regular and Intensive) – Not Found
Age (1998)	12.4 (2.2)	12.4 (2.2)	12.5 (2.2)	12.7 (2.1)	-0.37*** (0.09)
Grade (1998)	4.26 (1.69)	4.24 (1.68)	4.24 (1.70)	4.32 (1.70)	-0.105 (0.063)
Female	0.486 (0.500)	0.461 (0.499)	0.495 (0.501)	0.535 (0.499)	-0.072*** (0.016)
Assignment to the deworming treatment group	0.675 (0.468)	0.681 (0.466)	0.665 (0.473)	0.664 (0.472)	0.006 (0.020)
Group 1 school	0.357 (0.479)	0.355 (0.479)	0.354 (0.479)	0.362 (0.481)	-0.015 (0.025)
Group 2 school	0.318 (0.466)	0.326 (0.469)	0.311 (0.463)	0.302 (0.459)	0.021 (0.021)
Years of assigned deworming treatment during 1998-2003	3.29 (1.83)	3.32 (1.82)	3.25 (1.83)	3.22 (1.85)	0.069 (0.090)
Primary school located in Budalangi division	0.380 (0.486)	0.361 (0.480)	0.389 (0.488)	0.420 (0.494)	-0.067*** (0.023)
Population of primary school	484 (221)	480 (223)	465 (178)	496 (222)	-20** (8)
School average test score (1996)	0.043 (0.439)	0.035 (0.434)	0.023 (0.416)	0.066 (0.453)	-0.026 (0.021)
Total treatment (Group 1 and 2) primary school students within 6 km	3171 (910)	3182 (915)	3174 (918)	3149 (900)	30 (36)
Total primary school students within 6 km	4678 (1340)	4713 (1342)	4691 (1335)	4602 (1334)	93 (62)
Number of observations ^a	7530	4891	421	2218	7530

Notes: The regression results (Found – Not Found) in column 5 reweights appropriately for intensive tracking. ^a The number of observations is correct except for the Age (1998) variable, which has somewhat more missing data.

Supplementary Appendix Table A6: Deworming impacts on labor earnings (2007-2009), robustness checks (out-of-school, wage-earner sample)

	Dependent variable:			
	Ln(Total labor earnings, past month)			
	(1)	(2)	(3)	(4)
Deworming Treatment indicator	0.311*** (0.092)	0.318*** (0.092)	0.371*** (0.088)	0.386*** (0.090)
Deworming Treatment pupils within 6 km (in '000s), demeaned	0.268* (0.157)	0.218 (0.154)	0.337*** (0.123)	0.444** (0.177)
Total pupils within 6 km (in '000s), demeaned	-0.148 (0.120)	-0.188 (0.118)	-0.184** (0.094)	-0.167 (0.120)
Cost sharing school (in 2001) indicator	-0.180** (0.088)	-0.182** (0.092)	-0.195** (0.095)	-0.262*** (0.089)
Cost sharing school pupils within 6 km (in '000s), demeaned				-0.273** (0.119)
Gender-age indicators	No	Yes	No	No
Randomization triplets	No	No	Yes	No
Additional controls	Yes	Yes	Yes	Yes
R ²	0.071	0.178	0.186	0.187
Observations	687	687	687	687
Mean (s.d.) in the control group	7.84 (0.85)	7.84 (0.85)	7.84 (0.85)	7.84 (0.85)

Notes: The sample used here includes all individuals surveyed in the KLPS2 who report positive labor earnings at the time of survey and were not enrolled in school in the year of the survey. Labor earnings include cash and in-kind, and are deflated to reflect price differences between rural and urban areas. All observations are weighted to maintain initial population proportions. The dependent variable in column (1) is ln(total labor earnings, past month), with the top 1% of responses trimmed. All regressions include controls for baseline 1998 primary school population, geographic zone of the school, and survey wave and month of interview. Additional controls include a female indicator variable, baseline 1998 school grade fixed effects, and the average school test score on the 1996 Busia District mock exams. Standard errors are clustered by school. Significant at 90% (*), 95% (**), 99% (***) confidence.

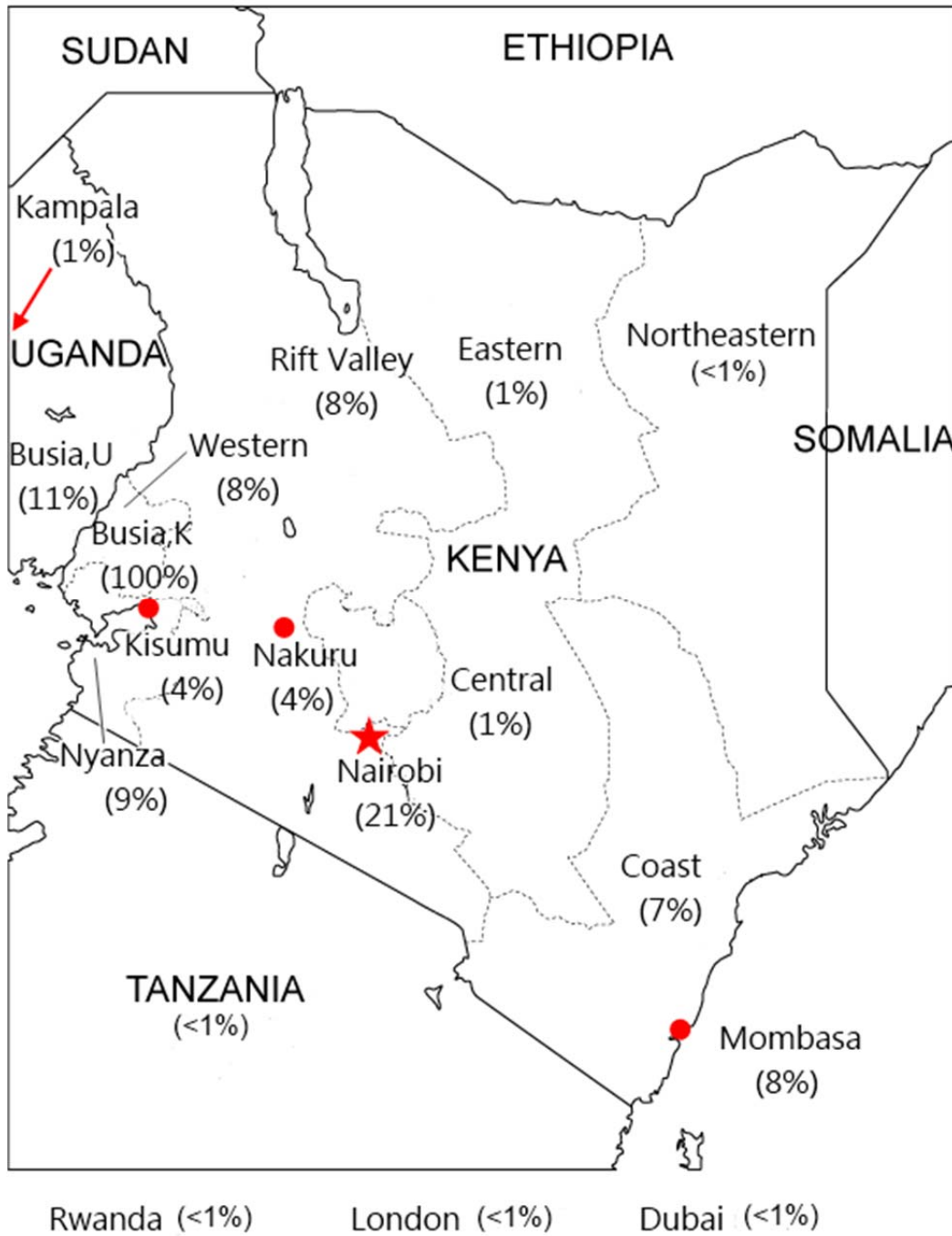
Supplementary Appendix Table A7: Deworming impacts on labor market outcomes among subgroups (wage-earner, out-of-school sample)

	Ln (Total labor earnings, past month)				Number of meals eaten yesterday			
	(1)	(2)	(3)	(4)	(5)	(6)	(7)	(8)
Deworming Treatment indicator	0.274*** (0.106)	0.260* (0.140)	0.302*** (0.092)	0.337** (0.091)	0.160*** (0.046)	0.060 (0.042)	0.100*** (0.028)	0.105*** (0.028)
Female	-0.482*** (0.157)	-0.433*** (0.103)	-0.427*** (0.100)	-0.436*** (0.099)	0.168*** (0.058)	0.092*** (0.029)	0.093*** (0.029)	0.092*** (0.029)
Female * Treatment	0.093 (0.213)	--	--	--	-0.112* (0.066)	--	--	--
Grades 5-7 in 1998	--	0.372*** (0.138)	--	--	--	-0.046 (0.043)	--	--
Grades 5-7 * Treatment	--	0.057 (0.168)	--	--	--	0.085 (0.055)	--	--
Moderate-heavy worm infection rate at the zonal level (1998), demeaned	--	--	-0.029 (0.085)	--	--	--	-0.026 (0.024)	--
Moderate-heavy infection rate * Treatment	--	--	0.051 (0.079)	--	--	--	0.013 (0.025)	--
Moderate-heavy geohelminth infection rate at the zonal level (1998), demeaned	--	--	--	-0.019 (0.084)	--	--	--	-0.009 (0.024)
Moderate-heavy geohelminth infection rate * Treatment	--	--	--	-0.057 (0.069)	--	--	--	-0.004 (0.025)
Moderate-heavy schistosomiasis infection rate at the zonal level (1998), demeaned	--	--	--	-0.073 (0.049)	--	--	--	-0.015 (0.023)
Moderate-heavy schistosomiasis infection rate * Treatment	--	--	--	0.142* (0.077)	--	--	--	0.017 (0.024)
Additional controls	Yes	Yes	Yes	Yes	Yes	Yes	Yes	Yes
R ²	0.186	0.174	0.186	0.192	0.038	0.037	0.036	0.036
Observations	687	687	687	687	3,872	3,872	3,872	3,872
Mean (s.d.) in the control group	7.8 (0.85)	7.8 (0.85)	7.8 (0.85)	7.8 (0.85)	2.16 (0.64)	2.16 (0.64)	2.16 (0.64)	2.16 (0.64)

Notes: The sample used in columns (1)-(4) include all individuals surveyed in the KLPS2 with data for the relevant dependent variable who were not enrolled in school at the time of survey and additionally restricts to those who report positive labor earnings at the time of survey. The sample used in columns (5)-(8)

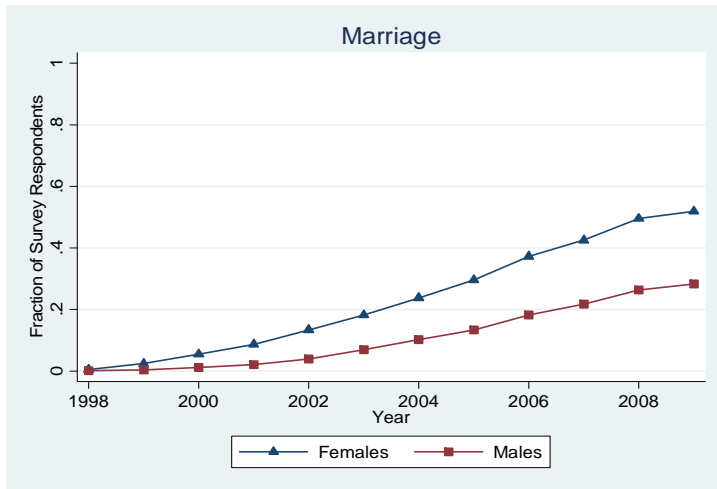
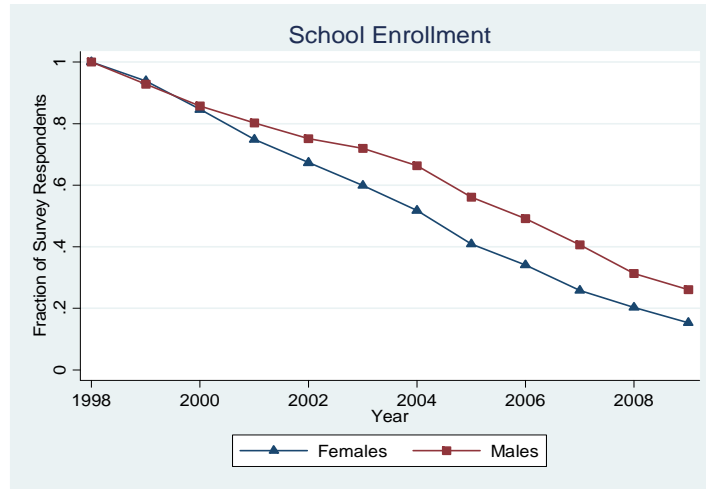
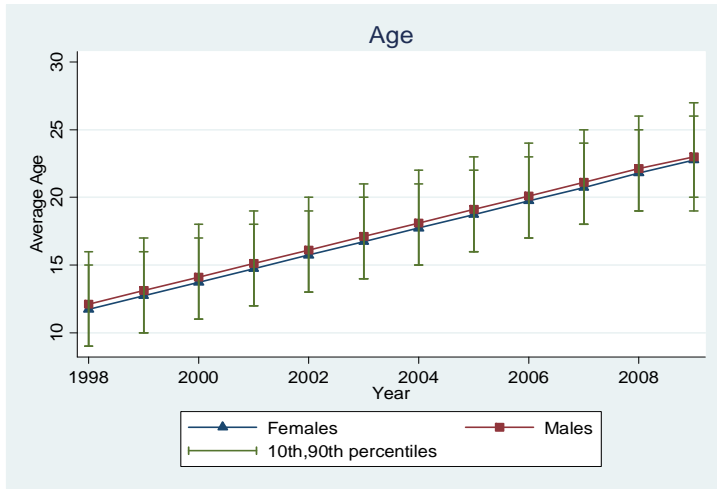
include all individuals surveyed in the KLPS2 with data for the relevant dependent variable who were not enrolled in school at the time of survey. All observations are weighted to maintain initial population proportions. Additional controls include a gender indicator, baseline grade fixed effects, geographic zone fixed effects, the mean pre-program school test score, baseline school population, cost-sharing school in 2001 indicator, survey wave indicator, and month of interview fixed effects, as well as both the total number of deworming treatment school pupils and the total number of primary school pupils within 6 km (in '000s), demeaned (coefficient estimates not shown). Standard errors are clustered by school. Significant at 90% (*), 95% (**), 99% (***) confidence.

Supplementary Appendix Figure A1: Migration residential location map

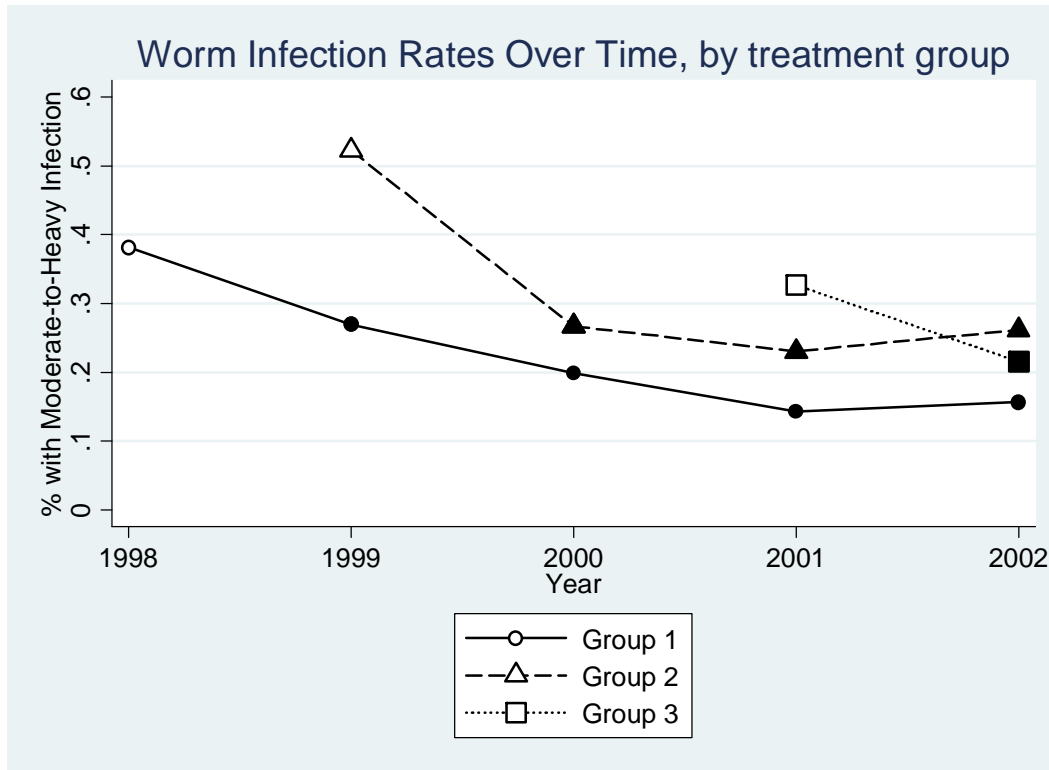


Notes: Percentages sum to greater than one, since they capture residential location (for at least four consecutive months) at any point during 1998-2009.

Supplementary Appendix Figure A2: Age, School Enrollment, Marriage and Employment Patterns over 1998-2009



Supplementary Appendix Figure A3: Moderate-heavy worm infection rates over time by PSDP treatment group



Notes: Hollow symbols (circles, triangles, squares) denote pre-deworming observations (for the group), and filled symbols denote post-deworming. Group 1 and Group 2 schools are jointly considered “treatment” in most of the analysis in the paper. Note that half of the Group 1 and Group 2 schools took part in deworming cost-sharing in 2001, likely accounting for some of the slight rise in infection rates observed in those groups between 2001 and 2002.